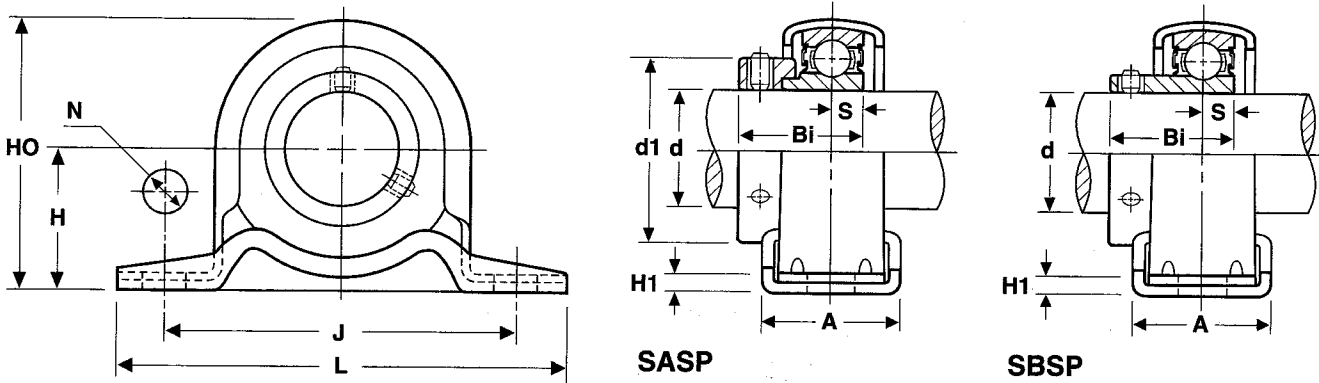


SBSP/SASP Pressed Steel Housing Units

PILLOW BLOCKS



SBSP200 SERIES - SET SCREW TYPE

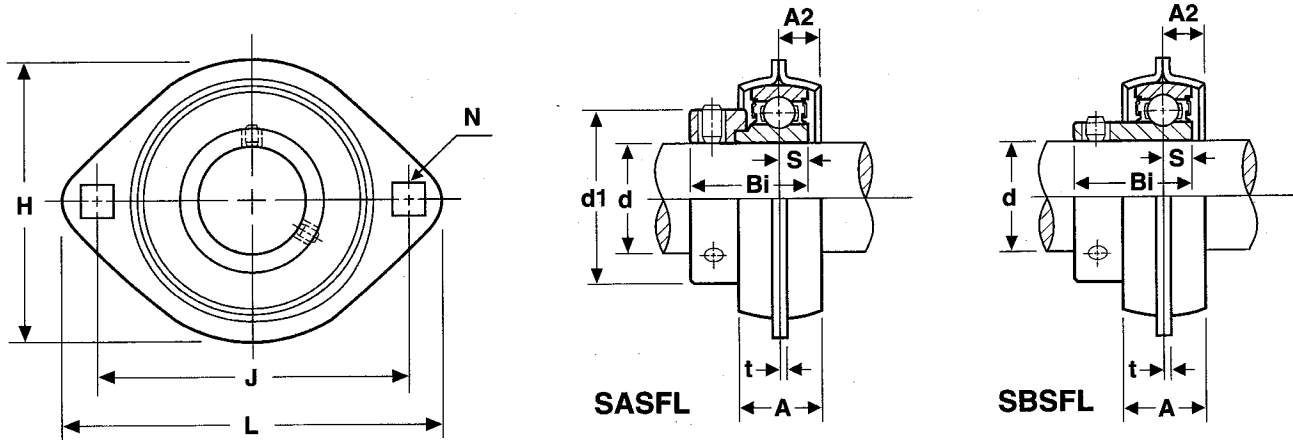
A&L Unit Number	Shaft Dia. d	DIMENSIONS										Bolt Used	Bearing Number	Housing No.	Weight lbs
		H	L	J	A	N	H1	HO	S	Bi					
SBSP201-8	1/2	22.2	86	68	25	9.5	3.2	43.8	5	22	5/16	SB201-8	40PB	0.35	
SBSP202-10	5/8	0.8740	3.3858	2.6772	0.9843	0.3740	0.1260	1.7244	0.1968	0.8661		SB202-10			
SBSP203	17mm												SB203		
SBSP204-12	3/4	25.4	98	76	32	9.5	3.2	50.5	7.0	25	5/16	SB204-12	47PB	0.51	
SBSP204	20mm	1.0000	3.8583	2.9921	1.2598	0.3740	0.1260	1.9882	0.2756	0.9843		SB204			
SBSP205-14	7/8											SB205-14			
SBSP205-15	15/16	28.6	108	86	32	11.5	4	56.6	7.5	27	3/8	SB205-15	52PB	0.66	
SBSP205-16	1	1.1260	4.2520	3.3858	1.2598	0.4528	0.1575	2.2283	0.2953	1.0630		SB205-16			
SBSP205	25mm											SB205			
SBSP206-18	1-1/8											SB206-18			
SBSP206-19	1-3/16	33.3	117	95	38	11.5	4	66.3	8.0	29	3/8	SB206-19	62PB	0.99	
SBSP206-20	1-1/4	1.3110	4.6063	3.7402	1.4961	0.4528	0.1575	2.6102	0.3150	1.1417		SB206-20			
SBSP206	30mm											SB206			
SBSP207-20	1-1/4											SB207-20			
SBSP207-21	1-5/16	39.69	128.59	106.36	41.28	11.5	5	77.8	8	32	3/8	SB207-21	72PB	1.43	
SBSP207-22	1-3/8	1.5626	5.0626	4.1874	1.6252	0.4528	0.1969	3.0630	0.3150	1.2598		SB207-22			
SBSP207-23	1-7/16											SB207-23			

SASP200 SERIES - ECCENTRIC LOCKING COLLAR TYPE

A&L Unit Number	Shaft Dia. d	DIMENSIONS										Bolt Used	Bearing Number	Housing No.	Weight lbs
		H	L	J	A	N	H1	HO	S	Bi	d1				
SASP201-8	1/2	22.2	86	68	25	9.5	3.2	43.8	7.0	29.5	28.6	5/16	SA201-8	40PB	0.42
SASP202-10	5/8	0.8740	3.3858	2.6772	0.9843	0.3740	0.1260	1.7244	0.2756	1.1614	1.1260		SA202-10		
SASP203	17mm												SA203		
SASP204-12	3/4	25.4	98	76	32	9.5	3.2	50.5	7.0	29.5	33.3	5/16	SA204-12	47PB	0.51
SASP204	20mm	1.0000	3.8583	2.9921	1.2598	0.3740	0.1260	1.9882	0.2756	1.1614	1.3110		SA204		
SASP205-14	7/8												SA205-14		
SASP205-15	15/16	28.6	108	86	32	11.5	4	56.6	7.5	30.5	38.1	3/8	SA205-15	52PB	0.71
SASP205-16	1	1.1260	4.2520	3.3858	1.2598	0.4528	0.1575	2.2283	0.2953	1.2008	1.5000		SA205-16		
SASP205	25mm												SA205		
SASP206-18	1-1/8												SA206-18		
SASP206-19	1-3/16	33.3	117	95	38	11.5	4	66.3	8.0	33.9	44.5	3/8	SA206-19	62PB	1.1
SASP206-20	1-1/4	1.3110	4.6063	3.7402	1.4961	0.4528	0.1575	2.6102	0.3150	1.3346	1.7520		SA206-20		
SASP206	30mm												SA206		
SASP207-20	1-1/4												SA207-20		
SASP207-21	1-5/16	39.69	128.59	106.36	41.28	11.5	5	77.8	8	37.5	55.6	3/8	SA207-21	72PB	1.54
SASP207-22	1-3/8	1.5626	5.0626	4.1874	1.6252	0.4528	0.1969	3.0630	0.3150	1.4764	2.1890		SA207-22		
SASP207-23	1-7/16												SA207-23		

SBSFL/SASFL Pressed Steel Housing Units

2-BOLT FLANGES



SBSFL200 SERIES - SET SCREW TYPE

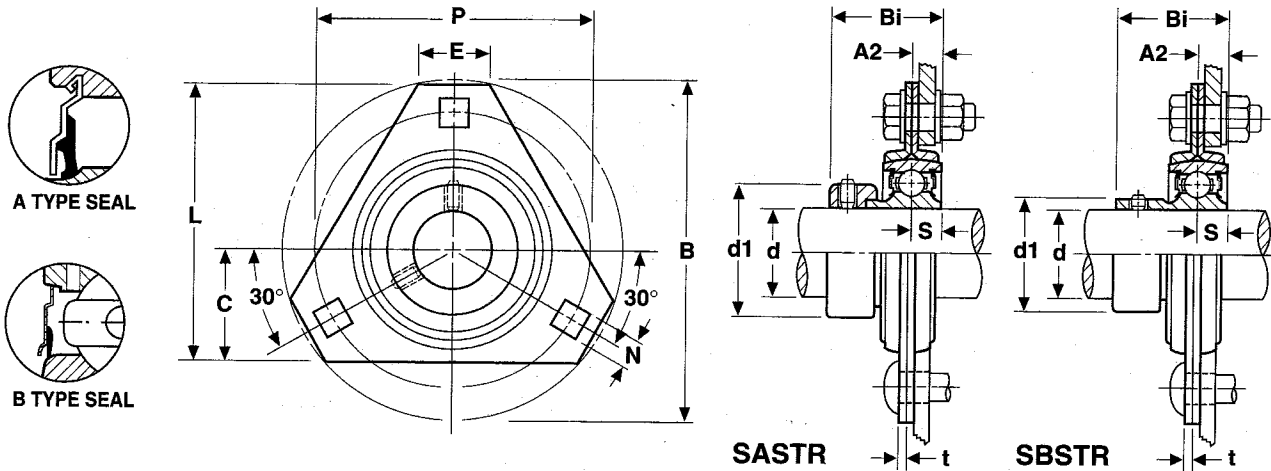
A&L Unit Number	Shaft Dia. d	DIMENSIONS										Bolt Used	Bearing Number	Housing No.	Weight lbs
		H	L	J	A2	A	t	N	S	Bi					
SBSFL201-8	1/2	58.74	81	63.5	7.0	59	2.0	7.5	5	22.0	1/4	SB201-8	40MST	0.42	
SBSFL202-10	5/8	2.3125	3.1890	2.5000	0.2756	2.3228	0.0787	0.2953	0.1968	0.8661		SB202-10			
SBSFL203	17mm											SB203			
SBSFL204-12	3/4	66.80	90	71.5	8.5	67	2.0	9.0	7.0	25.0	5/16	SB204-12	47MST	0.53	
SBSFL204	20mm	2.9299	3.5433	2.8150	0.3346	2.6378	0.0787	0.3543	0.2756	0.9843		SB204			
SBSFL205-14	7/8											SB205-14			
SBSFL205-15	15/16	70.64	95	76	10.0	71	2.0	9.0	7.5	27.0	5/16	SB205-15	52MST	0.64	
SBSFL205-16	1	2.7812	3.7402	2.9921	0.3937	2.7953	0.0787	0.3543	0.2953	1.0630		SB205-16			
SBSFL205	25mm											SB205			
SBSFL206-18	1-1/8											SB206-18			
SBSFL206-19	1-3/16	84.14	113	90.5	11.5	84	2.6	10.5	8.0	29.0	3/8	SB206-19	62MST	0.95	
SBSFL206-20	1-1/4	3.3125	4.4488	3.5630	0.4528	3.3071	0.1024	0.4134	0.3150	1.1417		SB206-20			
SBSFL206	30mm											SB206			
SBSFL207-20	1-1/4											SB207-20			
SBSFL207-21	1-5/16	93.66	122	100	13.0	93.6	2.6	10.5	8.5	32.0	3/8	SB207-21	72MST	1.19	
SBSFL207-22	3.6874	3.6874	1-3/8	4.8031	3.9370	0.5118	3.6850	0.1024	0.4134	0.3346	1.2598	SB207-22			
SBSFL207-23	1-7/16											SB207-23			
SBSFL207	35mm											SB207			

SASFL200 SERIES - ECCENTRIC LOCKING COLLAR TYPE

A&L Unit Number	Shaft Dia. d	DIMENSIONS										Bolt Used	Bearing Number	Housing No.	Weight lbs
		L	J	A2	A	t	N	S	Bi	d1					
SASFL201-8	1/2	81	63.5	7.0	59	2.0	7.5	7.0	29.5	28.6	1/4	SA201-8	40MST	0.49	
SASFL202-10	5/8	3.1890	2.5000	0.2756	2.3228	0.0787	0.2953	0.2756	1.1614	1.1260		SA202-10			
SASFL203	17mm											SA203			
SASFL204-12	3/4	90	71.5	8.5	67	2.0	9.0	7.0	29.5	33.3	5/16	SA204-12	47MST	0.62	
SASFL204	20mm	3.5433	2.8150	0.3346	2.6378	0.0787	0.3543	0.2756	1.1614	1.3110		SA204			
SASFL205-14	7/8											SA205-14			
SASFL205-15	15/16	95	76	10.0	71	2.0	9.0	7.5	30.5	38.1	5/16	SA205-15	52MST	0.73	
SASFL205-16	1	3.7402	2.9921	0.3937	2.7953	0.0787	0.3543	0.2953	1.2008	1.5000		SA205-16			
SASFL205	25mm											SA205			
SASFL206-18	1-1/8											SA206-18			
SASFL206-19	1-3/16	113	90.5	11.5	84	2.6	10.5	8.0	33.9	44.5	3/8	SA206-19	62MST	1.06	
SASFL206-20	1-1/4	4.4488	3.5630	0.4528	3.3071	0.1024	0.4134	0.3150	1.3346	1.7520		SA206-20			
SASFL206	30mm											SA206			
SASFL207-20	1-1/4											SA207-20			
SASFL207-21	1-5/16	122	100	13.0	93.6	2.6	10.5	8.5	37.5	55.6	3/8	SA207-21	72MST	1.30	
SASFL207-22	1-3/8	4.8031	3.9370	0.5118	3.6850	0.1024	0.4134	0.3346	1.4764	2.1890		SA207-22			
SASFL207-23	1-7/16											SA207-23			
SASFL207	35mm											SA207			

SBSTR/SASTR Pressed Steel Housing Units

3-BOLT TRIANGULAR FLANGES



SBSTR200 SERIES - SET SCREW TYPE

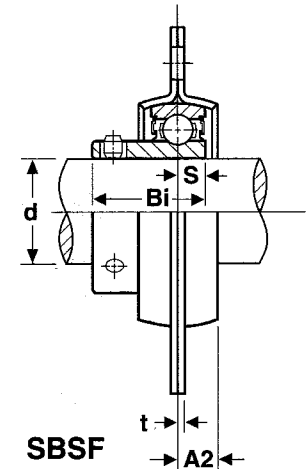
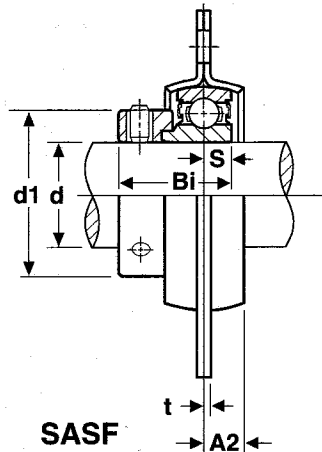
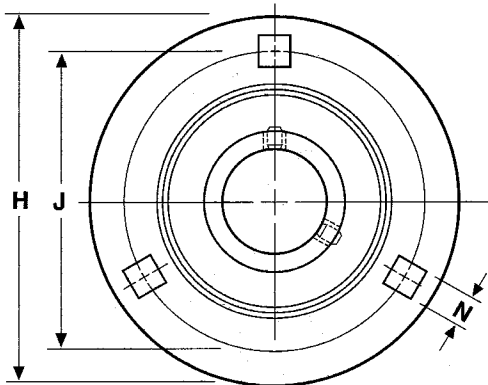
A&L Unit Number	Shaft Dia. d	DIMENSIONS										Bolt Used	Bearing Number	Housing No.	Weight											
		L	B	C	N	E	P	A2	t	Bi	S				kg	lbs										
SBSTR201-8	1/2	69.06	83.74	28.57	7.143	20.64	63.50	7.14	1.90	22.00	5	1/4	SB201-8	40MSTRZP	.20	.45										
SBSTR202-10	5/8	2.719	3.297	1.125	0.281	0.812	2.500	0.281	0.075	0.8661	0.1968															
SBSTR204-12	3/4	76.20	90.49	33.34	8.73	26.99	71.44	7.94	2.11	25.00	7.00	5/16	SB204-12	47MSTRZP	.27	.60										
SBSTR204	20mm	3.000	3.563	1.313	0.344	1.062	2.813	0.313	0.083	0.984	0.276															
SBSTR205-14	7/8	79.37	95.25	34.93	8.73	27.78	76.2	8.73	2.11	27	7.493	5/16	SB205-14	52MSTRZP	.31	.69										
SBSTR205-15	15/16																									
SBSTR205-16	1																									
SBSTR205	25mm	3.125	3.750	1.375	0.344	1.094	3.000	0.344	0.083	1.063	0.295		SB205-16													
SBSTR206-17	1-1/16	93.66	112.71	38.10	10.32	25.40	90.49	8.73	2.64	29	8.00	3/8	SB206-17	62MSTRZP	.48	1.05										
SBSTR206-18	1-1/8																									
SBSTR206-19	1-3/16											3.688	4.437	1.500	0.406	1.000	3.563	0.344	0.104	1.142	0.315		SB206-18			
SBSTR206-20	1-1/4																						SB206-19			
SBSTR206	30mm												SB206-20													
SBSTR207-20	1-1/4	105.57	126.6	44.45	10.32	32.15	100.01	9.53	2.64	32	9.00	3/8	SB207-20	72MSTRZP	.59	1.29										
SBSTR207-21	1-5/16																									
SBSTR207-22	1-3/8											4.156	4.984	1.750	0.406	1.266	3.937	0.375	0.104	1.260	0.354		SB207-21			
SBSTR207-23	1-7/16																						SB207-22			
SBSTR207	35mm												SB207-23													

SASTR200 SERIES - ECCENTRIC LOCKING COLLAR TYPE

A&L Unit Number	Shaft Dia. d	DIMENSIONS										Bolt Used	Bearing Number	Housing No.	Weight												
		L	B	C	N	E	P	A2	t	Bi	S				d1	kg	lbs										
SASTR201-8	1/2	69.06	83.74	28.57	7.143	20.64	63.50	7.14	1.90	28.60	6.50	28.60	1/4	SA201-8	40MSTRZP	.23	.50										
SASTR202-10	5/8	2.719	3.297	1.125	0.281	0.812	2.500	0.281	0.075	1.126	0.256	1.126															
SASTR204-12	3/4	76.20	90.49	33.34	8.73	26.99	71.44	7.94	2.11	29.50	7.00	33.30	5/16	SA204-12	47MSTRZP	.31	.60										
SASTR204	20mm	3.000	3.563	1.313	0.344	1.062	2.813	0.313	0.083	1.161	0.276	1.311															
SASTR205-14	7/8	79.37	95.25	34.93	8.73	27.78	76.2	8.73	2.11	30.50	7.50	38.10	5/16	SA205-14	52MSTRZP	.35	.78										
SASTR205-15	15/16																										
SASTR205-16	1												3.125	3.750	1.375	0.344	1.094	3.000	0.344	0.083	1.201	0.295	1.500		SA205-15		
SASTR205	25mm													SA205-16													
SASTR206-17	1-1/16	93.66	112.71	38.10	10.32	25.40	90.49	8.73	2.64	33.90	8.00	44.50	3/8	SA206-17	62MSTRZP	.53	1.16										
SASTR206-18	1-1/8																										
SASTR206-19	1-3/16												3.688	4.437	1.500	0.406	1.000	3.563	0.344	0.104	1.335	0.315	1.752		SA206-18		
SASTR206-20	1-1/4																								SA206-19		
SASTR206	30mm													SA206-20													
SASTR207-20	1-1/4	105.57	126.60	44.45	10.32	32.15	100.01	9.53	2.64	37.50	9.00	55.60	3/8	SA207-20	72MSTRZP	.63	1.40										
SASTR207-21	1-5/16																										
SASTR207-22	1-3/8												4.156	4.984	1.750	0.406	1.266	3.937	0.375	0.104	1.476	0.354	2.189		SA207-21		
SASTR207-23	1-7/16																								SA207-22		
SASTR207	35mm													SA207-23													

SBSF/SASF Pressed Steel Housing Units

3-BOLT ROUND FLANGES



SBSF200 SERIES - SET SCREW TYPE

A&L Unit Number	Shaft Dia. d	DIMENSIONS								Bolt Used	Bearing Number	Housing Number	Stamping Radial Load Rating	Weight lbs
		H	J	A2	t	N	S	Bi						
SBSF201-08	1/2	82	64	7.0	2.0	7.5	5	22.0	1/4	SB201-08	40MS	600	0.60	
SBSF202-10	5/8	3.2283	2.5197	0.2756	0.0787	0.2953	0.1968	0.8661		SB202-10				
SBSF203	17mm									SB203				
SBSF204-12	3/4	91	71	8.5	2.0	9.0	7.0	25.0	5/16	SB204-12	47MS	700	0.73	
SBSF204	20mm	3.5827	2.7953	0.3346	0.0787	0.3543	0.2756	0.9843		SB204				
SBSF205-14	7/8	95	76	10.0	2.0	9.0	7.5	27.0	5/16	SB205-14	52MS	800	0.84	
SBSF205-15	15/16									SB205-15				
SBSF205-16	1	3.7402	2.9921	0.3937	0.0787	0.3543	0.2953	1.0630		SB205-16				
SBSF205	25mm									SB205				
SBSF206-18	1-1/8	113	90	11.5	2.6	10.5	8.0	29.0	3/8	SB206-18	62MS	1100	1.4	
SBSF206-19	1-3/16									SB206-19				
SBSF206-20	1-1/4	4.4488	3.5433	0.4528	0.1024	0.4134	0.3150	1.1417		SB206-20				
SBSF206	30mm									SB206				
SBSF207-20	1-1/4	122	100	13.0	2.6	10.5	8.5	32.0	3/8	SB207-20	72MS	1400	1.8	
SBSF207-21	1-5/16									SB207-21				
SBSF207-22	1-3/8	4.8031	3.9370	0.5118	0.1024	0.4134	0.3346	1.2598		SB207-22				
SBSF207-23	1-7/16									SB207-23				
SBSF207	35mm									SB207				

SASF200 SERIES - ECCENTRIC LOCKING COLLAR TYPE

A&L Unit Number	Shaft Dia. d	DIMENSIONS								Bolt Used	Bearing Number	Housing Number	Stamping Radial Load Rating	Weight lbs
		H	J	A2	t	N	S	Bi	d1					
SASF201-08	1/2	82	64	7.0	2.0	7.5	7.0	23	28.6	1/4	SA201-08	40MS	600	0.66
SASF202-10	5/8	3.2283	2.5197	0.2756	0.0787	0.2953	0.2756	0.9055	1.1260		SA202-10			
SASF203	17mm										SA203			
SASF204-12	3/4	91	71	8.5	2.0	9.0	7.0	25	33.3	5/16	SA204-12	47MS	700	0.73
SASF204	20mm	3.5827	2.7953	0.3346	0.0787	0.3543	0.2756	0.9843	1.3110		SA204			
SASF205-14	7/8	95	76	10.0	2.0	9.0	7.5	27	38.1	5/16	SA205-14	52MS	800	0.93
SASF205-15	15/16										SA205-15			
SASF205-16	1	3.7402	2.9921	0.3937	0.0787	0.3543	0.2953	1.0630	1.5000		SA205-16			
SASF205	25mm										SA205			
SASF206-18	1-1/8	113	90	11.5	2.6	10.5	8.0	29	44.5	3/8	SA206-18	62MS	1100	1.4
SASF206-19	1-3/16										SA206-19			
SASF206-20	1-1/4	4.4488	3.5433	0.4528	0.1024	0.4134	0.3150	1.1417	1.7520		SA206-20			
SASF206	30mm										SA206			
SASF207-20	1-1/4	122	100	13.0	2.6	10.5	8.5	32	55.6	3/8	SA207-20	72MS	1400	2.0
SASF207-21	1-5/16										SA207-21			
SASF207-22	1-3/8	4.8031	3.9370	0.5118	0.1024	0.4134	0.3346	1.2598	2.1890		SA207-22			
SASF207-23	1-7/16										SA207-23			
SASF207	35mm										SA207			

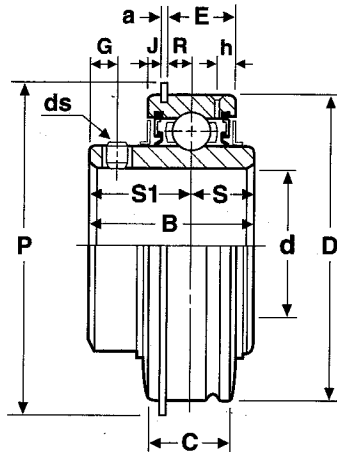
NOTE: Thrust ratings for stampings are 50% of radial ratings.

SER Insert Bearings

SET SCREW TYPE — SNAP RING SERIES



SR TYPE SEAL



A&L Unit Number	Shaft Dia. d	DIMENSIONS												Set Screw ds UNF	Weight			
		D	B	C	S	S1	E	a	h	R	J	P	G		kg	lbs		
SER201-08	1/2																	
SER202-10	5/8	47	31	16	12.7	18.3	12.55	1.07	4	4.93	2.38	52.5	5	1/4-28	0.53	1.17		
SER204-12	3/4	1.8504	1.2205	0.6299	0.5000	0.7205	0.4941	0.0421	0.1575	0.1941	0.0937	2.0669	0.1969					
SER204	20mm																	
SER205-14	7/8																	
SER205-15	15/16	52	34	19	14.3	19.7	15.55	1.07	5	6.03	2.38	57.7	5.5	1/4-28	0.68	1.50		
SER205-16	1	2.0472	1.3386	0.7480	0.5630	0.7756	0.6122	0.0421	0.1969	0.2374	0.0937	2.2717	0.2165					
SER205	25mm																	
SER206-18	1-1/8																	
SER206-19	1-3/16	62	38.1	22	15.9	22.2	17.17	1.65	5.5	6.15	3.18	67.5	6	1/4-28	0.85	1.87		
SER206-20	1-1/4	2.4409	1.5000	0.8661	0.6260	0.8740	0.6760	0.0650	0.2165	0.2421	0.1252	2.6575	0.2362					
SER206	30mm																	
SER207-20	1-1/4																	
SER207-22	1-3/8	72	42.9	24	17.5	25.4	19.17	1.65	5.5	7.15	3.18	78.4	6.5	5/16-24	1.37	3.01		
SER207-23	1-7/16	2.8346	1.6890	0.9449	0.6890	1.0000	0.7547	0.0650	0.2165	0.2815	0.1252	3.0866	0.2559					
SER207	35mm																	
SER208-24	1-1/2	80	49.2	28	19	30.2	23.17	1.65	6	9.15	3.18	86.4	8	5/16-24	2.01	4.42		
SER208	40mm	3.1496	1.9370	1.1024	0.7480	1.1890	0.9122	0.0650	0.2362	0.3602	0.1252	3.4016	0.3150					
SER209-26	1-5/8																	
SER209-27	1-11/16	85	49.2	28	19	30.2	23.17	1.65	6	9.15	3.18	91.4	8	5/16-24	2.21	4.86		
SER209-28	1-3/4	3.3465	1.9370	1.1024	0.7480	1.1890	0.9122	0.0650	0.2362	0.3602	0.1252	3.5984	0.3150					
SER209	45mm																	
SER210-30	1-7/8																	
SER210-31	1-15/16	90	51.6	28	19	32.6	22.41	2.41	7.5	8.39	3.18	96.3	9	3/8-24	2.35	5.17		
SER210-32	2	3.5433	2.0315	1.1024	0.7480	1.2835	0.8823	0.0949	0.2953	0.3303	0.1252	3.7913	0.3543					
SER210	50mm																	
SER211-32	2																	
SER211-34	2-1/8	100	55.6	30	22.2	33.4	24.41	2.41	7.5	9.39	3.18	106.3	9	3/8-24	3.00	6.60		
SER211-35	2-3/16	3.9370	2.1890	1.1811	0.8740	1.3150	0.9610	0.0949	0.2953	0.3697	0.1252	4.1850	0.3543					
SER211	55mm																	
SER212-36	2-1/4																	
SER212-38	2-3/8	110	65.1	32	25.4	39.7	26.41	2.41	7.5	10.39	3.18	116.4	10.5	3/8-24	3.68	8.10		
SER212-39	2-7/16	4.3307	2.5630	1.2598	1.0000	1.5630	1.0398	0.0949	0.2953	0.4091	0.1252	4.5827	0.4134					
SER212	60mm																	

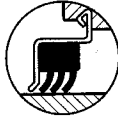
NOTE: Load ratings same as UC insert - See page 45. Snap ring furnished with bearing.

UC/CUC Insert Bearings

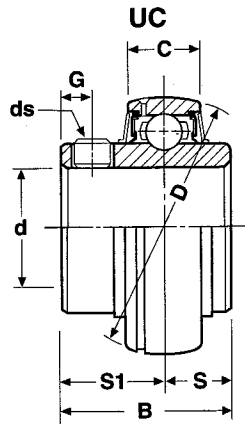
SET SCREW TYPE — WIDE INNER RING



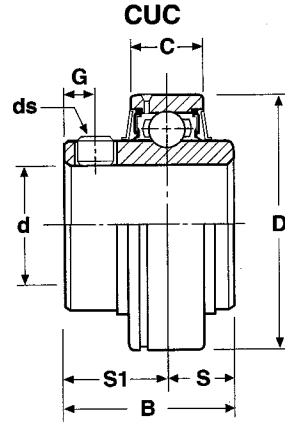
SR TYPE SEAL
STANDARD



R-3 TYPE SEAL
SPECIAL ORDER



SPHERICAL OD



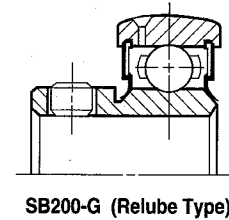
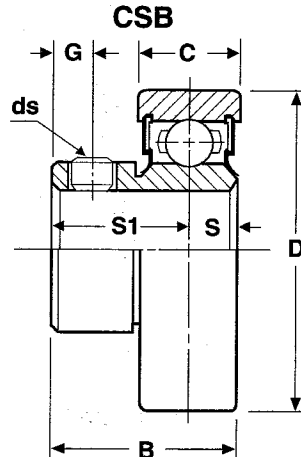
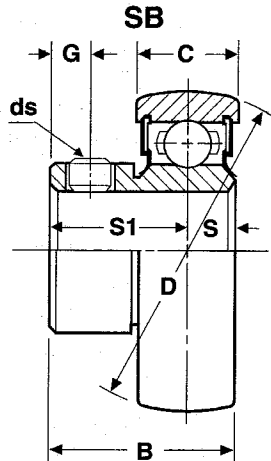
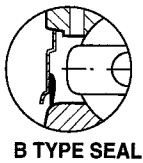
CYLINDRICAL OD

A&L Unit Number	Shaft Dia. d	DIMENSIONS						Set Screw ds UNF	Load Rating		Weight		
		D	B	C	S1	S	G		Basic (lbf)	Static (lbf)	kg	lbs	
UC201-08	1/2												
UC202-10	5/8	47	31	16	18.3	12.7	5	1/4-28	2230	1390	0.18	0.40	
UC203	17mm	1.8504	1.2205	0.6299	0.7205	0.5000	0.1969						
UC204-12	3/4												
UC204	20mm												
UC205-14	7/8												
UC205-15	15/16	52	34	17	19.7	14.3	5.5	1/4-28	2425	1562	0.23	0.51	
UC205-16	1	2.0472	1.3386	0.6693	0.7756	0.5630	0.2165						
UC205	25mm												
UC206-18	1-1/8												
UC206-19	1-3/16	62	38.1	19	22.2	15.9	6	1/4-28	3370	2250	0.34	0.75	
UC206-20	1-1/4	2.4409	1.5000	0.7480	0.8740	0.6260	0.2362						
UC206	30mm												
UC207-20	1-1/4												
UC207-21	1-5/16	72	42.9	20	25.4	17.5	6.5	5/16-24	4450	3064	0.53	1.17	
UC207-22	1-3/8	2.8346	1.6890	0.7874	1.0000	0.6890	0.2559						
UC207-23	1-7/16												
UC207	35mm												
UC208-24	1-1/2	80	49.2	21	30.2	19	8	5/16-24	5030	3330	0.68	1.50	
UC208	40mm	3.1496	1.9370	0.8268	1.1890	0.7480	0.3150						
UC209-26	1-5/8												
UC209-27	1-11/16	85	49.2	22	30.2	19	8	5/16-24	5665	4010	0.74	1.63	
UC209-28	1-3/4	3.3465	1.9370	0.8661	1.1890	0.7480	0.3150						
UC209	45mm												
UC210-30	1-7/8												
UC210-31	1-15/16	90	51.6	23	32.6	19	9	3/8-24	6020	4450	0.83	1.83	
UC210-32	2	3.5433	2.0315	0.9055	1.2835	0.7480	0.3543						
UC210	50mm												
UC211-32	2												
UC211-34	2-1/8	100	55.6	25	33.4	22.2	9	3/8-24	7450	5620	1.27	2.79	
UC211-35	2-3/16	3.9370	2.1890	0.9843	1.3150	0.8740	0.3543						
UC211	55mm												
UC212-36	2-1/4												
UC212-38	2-3/8	110	65.1	27	39.7	25.4	10.5	3/8-24	8995	6955	1.54	3.39	
UC212-39	2-7/16	4.3307	2.5630	1.0630	1.5630	1.0000	0.4134						
UC212	60mm												
UC213-40	2-1/2	120	65.1	28	39.7	25.4	12	3/8-24	9830	7650	1.94	4.27	
UC213	65mm	4.7244	2.5630	1.1024	1.5630	1.0000	0.4724						
UC214-44	2-3/4	125	74.6	30	44.4	30.2	12	7/16-20	10690	8400	2.06	4.53	
UC214	70mm	4.9213	2.9370	1.1811	1.7480	1.1890	0.4724						
UC215-47	2-15/16	130	77.8	30	44.5	33.3	12	7/16-20	11440	9240	2.30	5.06	
UC215-48	3	5.1181	3.0630	1.1811	1.7520	1.3110	0.4724						
UC215	75mm												

NOTE: CUC Series is not stocked. Refer to SER Series.

SB/CSB Insert Bearings

SET SCREW TYPE — NARROW INNER RING



SPHERICAL OD

CYLINDRICAL OD

A&L Unit Number	Shaft Dia. d	DIMENSIONS						Set Screw ds UNF	Load Rating		Weight	
		D	B	S	S1	C	G		Basic (lbf)	Static (lbf)	kg	lbs
SB201-08	1/2	40	22	5	17	12	5	10-32	1675	1000	0.10	0.22
SB202-10	5/8	1.5748	0.8661	0.1968	0.6693	0.4724	0.1969					
SB204-12	3/4	47	25	7	18	14	5	1/4-28	2230	1390	0.15	0.33
SB204	20 mm	1.8504	0.9843	0.2756	0.7087	0.5512	0.1969					
SB205-14	7/8											
SB205-15	15/16	52	27	7.5	19.5	15	5.5	1/4-28	2425	1565	0.18	0.396
SB205-16	1	2.0472	1.0630	0.2953	0.7677	0.5906	0.2165					
SB205	25mm											
SB206-18	1-1/8											
SB206-19	1-3/16	62	29	8	21	16	6	1/4-28	3370	2250	0.27	0.594
SB206-20	1-1/4	2.4409	1.1417	0.3150	0.8268	0.6299	0.2362					
SB206	30mm											
SB207-20	1-1/4											
SB207-21	1-5/16	72	32	9.0	23	18	6	5/16-24	4450	3064	0.42	0.924
SB207-22	1-3/8	2.8346	1.2598	0.3543	0.9055	0.7087	0.2362					
SB207-23	1-7/16											
SB207	35 mm											
SB208-24	1-1/2	80	34	9.5	24.5	19	7	5/16-24	5030	3530	0.60	1.32
SB208-25	1-9/16	3.1496	1.3386	0.3740	0.9646	0.7480	0.2756					
SB208	40 mm											
SB209-26	1-5/8											
SB209-27	1-11/16	85	36	10	26	20	8	5/16-24	5665	4010	0.27	0.594
SB209-28	1-3/4	3.3465	1.4173	0.3937	1.0236	0.7874	0.3150					
SB209	45mm											
SB210-30	1-7/8	90	38	10.5	27.5	21	8	5/16-24	6020	4450	0.27	0.594
SB210-31	1-15/16	3.5433	1.4961	0.4134	1.0827	0.8268	0.3150					
SB211-32	2											
SB211-34	2-1/8	100	41	11.6	29.5	23	9	3/8-24	7450	5620	0.27	0.594
SB211-35	2-3/16	3.9370	1.6142	0.4567	1.1614	0.9055	0.3543					
SB211	55mm											

NOTE: ADD "G" suffix for relube type. Grease groove is on set screw side of outer ring.

HC/CHC Insert Bearings

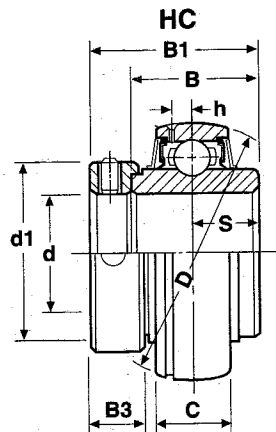
ECCENTRIC LOCKING COLLAR TYPE—WIDE INNER RING



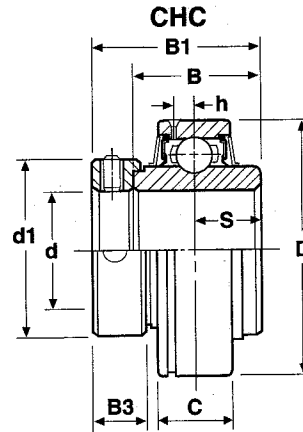
SR TYPE SEAL
STANDARD



R-3 TYPE SEAL
SPECIAL ORDER



SPHERICAL OD



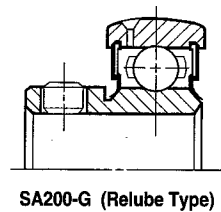
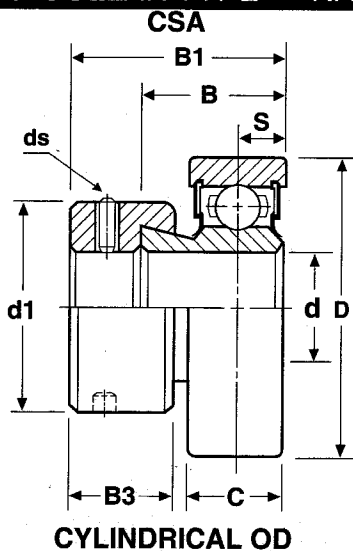
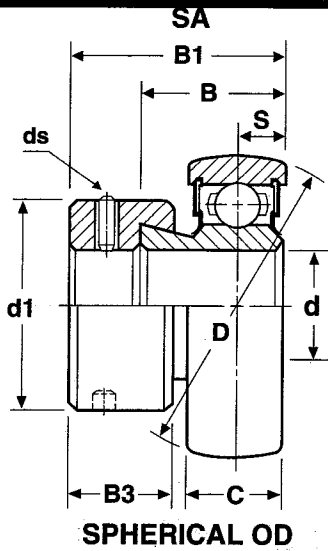
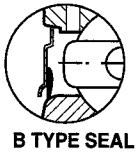
CYLINDRICAL OD

IBI Unit Number	Shaft Dia. d	DIMENSIONS								Load Rating		Weight		
		D	B	B1	S	C	B3	d1	h	Basic (lbf)	Static (lbf)	kg	lbs	
HC201-08	1/2													
HC202-10	5/8	47	34	43.5	17	16	13.5	33.3	4.5					
HC203	17mm	1.8504	1.3386	1.7126	0.6693	0.6299	0.5315	1.3110	0.1772	2230	1390	0.23	0.506	
HC204-12	3/4													
HC204	20mm													
HC205-14	7/8	52	34.8	44.3	17.4	17	13.5	38.1	4.5	2425	1565	0.29	0.638	
HC205-15	15/16	2.0472	1.3701	1.7441	0.6850	0.6693	0.5315	1.5000	0.1772					
HC205-16	1													
HC205	25mm													
HC206-18	1-1/8	62	36.4	48.3	18.2	19	15.9	44.5	5.3	3370	2250	0.43	0.946	
HC206-19	1-3/16	2.4409	1.4331	1.9016	0.7165	0.7480	0.6260	1.7520	0.2087					
HC206-20	1-1/4													
HC206	30mm													
HC207-20	1-1/4	72	37.6	51.1	18.8	20	17.5	55.6	5.7	4450	3064	0.68	1.496	
HC207-21	1-5/16	2.8346	1.4803	2.0118	0.7402	0.7874	0.6890	2.1890	0.2244					
HC207-22	1-3/8													
HC207-23	1-7/16													
HC207	35mm													
HC208-24	1-1/2	80	42.8	56.3	21.4	21	18.3	60.3	6.3	5030	3530	0.83	1.826	
HC208	40mm	3.1496	1.6850	2.2165	0.8425	0.8268	0.7205	2.3740	0.2480					
HC209-26	1-5/8	85	42.8	56.3	21.4	22	18.3	63.5	6.8	5665	4010	0.96	2.112	
HC209-27	1-11/16	3.3465	1.6850	2.2165	0.8425	0.8661	0.7205	2.5000	0.2677					
HC209-28	1-3/4													
HC209	45mm													
HC210-30	1-7/8	90	49.2	62.7	24.6	23	18.3	69.9	6.7	6020	4450	1.1	2.42	
HC210-31	1-15/16	3.5433	1.9370	2.4685	0.9685	0.9055	0.7205	2.7520	0.2638					
HC210-32	2													
HC210	50mm													
HC211-32	2	100	55.4	71.3	27.7	25	20.7	76.2	7.2	7450	5620	1.58	3.476	
HC211-34	2-1/8	3.9370	2.1811	2.8071	1.0906	0.9843	0.8150	3.0000	0.2835					
HC211-35	2-3/16													
HC211	55mm													
HC212-36	2-1/4	110	61.8	77.7	30.9	27	22.3	84	8.2	8995	6955	1.85	4.07	
HC212-38	2-3/8	4.3307	2.4331	3.0591	1.2165	1.0630	0.8780	3.3071	0.3228					
HC212-39	2-7/16													
HC212	60mm													
HC213-40	2-1/2	120	68.2	85.7	34.1	28	23.5	86	8	9830	7650	2.51	5.522	
HC213	65mm	4.7244	2.6850	3.3740	1.3425	1.1024	0.9252	3.3858	0.3150					
HC214-44	2-3/4	125	68.2	85.7	34.1	30	23.9	96	9	10690	8400	2.58	5.676	
HC214	70mm	4.9213	2.6850	3.3740	1.3425	1.1811	0.9409	3.7795	0.3543					
HC215-47	2-15/16	130	74.6	92.1	37.3	30	23.9	102	9	11440	9240	2.84	6.248	
HC215-48	3	5.1181	2.9370	3.6260	1.4685	1.1811	0.9409	4.0157	0.3543					
HC215	75mm													

NOTE: CHC Series is not generally stocked, check for availability.

SA/CSA Insert Bearings

ECCENTRIC LOCKING COLLAR TYPE — NARROW INNER RING

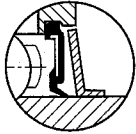


A&L Unit Number	Shaft Dia. d	DIMENSIONS							Load Rating		Weight		
		D	B	B1	S	C	B3	d1	Basic (lbf)	Static (lbf)	kg	lbs	
SA201-08	1/2												
SA201	12mm	40	19	28.6	6.5	12	13.5	28.6	1675	1000	0.13	0.286	
SA202	15mm	1.5748	0.7480	1.1260	0.2559	0.4710	0.5315	1.1260					
SA202-10	5/8												
SA203	17mm												
SA204-12	3/4	47	20	29.5	7	14	13.5	33.3	2230	1390	0.18	0.396	
SA204	20 mm	1.8504	0.7874	1.1614	0.2756	0.5512	0.5315	1.3110					
SA205-14	7/8												
SA205-15	15/16	52	21	30.5	7.5	15	13.5	38.1	2425	1565	0.22	0.484	
SA205-16	1	2.0472	0.8268	1.2008	0.2953	0.5906	0.5315	1.5000					
SA205	25mm												
SA206-18	1-1/8												
SA206-19	1-3/16	62	22	33.9	8	16	15.9	44.5	3370	2250	0.28	0.616	
SA206-20	1-1/4	2.4409	0.8661	1.3346	0.3150	0.6250	0.6260	1.7520					
SA206	30mm												
SA207-20	1-1/4												
SA207-21	1-5/16	72	24	37.5	9	17	17.5	55.6	4450	3064	0.50	1.10	
SA207-22	1-3/8	2.8346	0.9449	1.4764	0.3543	0.6700	0.6890	2.1890					
SA207-23	1-7/16												
SA207	35 mm												
SA208-24	1-1/2												
SA208-25	1-9/16	80	27	40.5	9.5	18	18.3	60.3	5030	3530	0.67	1.47	
SA208	40 mm	3.1496	1.0630	1.5945	0.3740	0.7080	0.7205	2.3740					
SA209-26	1-5/8												
SA209-27	1-11/16	85	28.7	42.2	10	19	18.3	63.5	5665	4010	0.82	1.80	
SA209-28	1-3/4	3.3465	1.1299	1.6614	0.3937	0.7490	0.7205	2.5000					
SA209	45 mm												
SA210-30	1-7/8												
SA210-31	1-15/16	90	30.2	43.7	10.5	20	18.3	69.9	6020	4450	0.85	1.87	
SA210-32	2	3.5433	1.1890	1.7205	0.4134	0.7860	0.7205	2.7520					
SA210	50 mm												
SA211-32	2												
SA211-34	2-1/8	100	32.4	48.4	11.5	23	20.7	76.2	7450	5620	1.18	2.60	
SA211-35	2-3/16	3.9370	1.2756	1.9055	0.4528	0.9055	0.8150	3.0000					
SA211	55 mm												

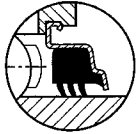
NOTE: ADD "G" suffix for relube type. Grease groove is on collar side.

UCX Inserts – Medium Duty

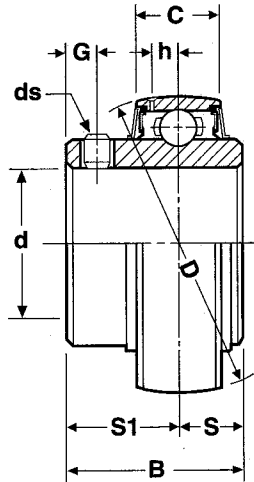
SET SCREW TYPE



**B TYPE SEAL
STANDARD**

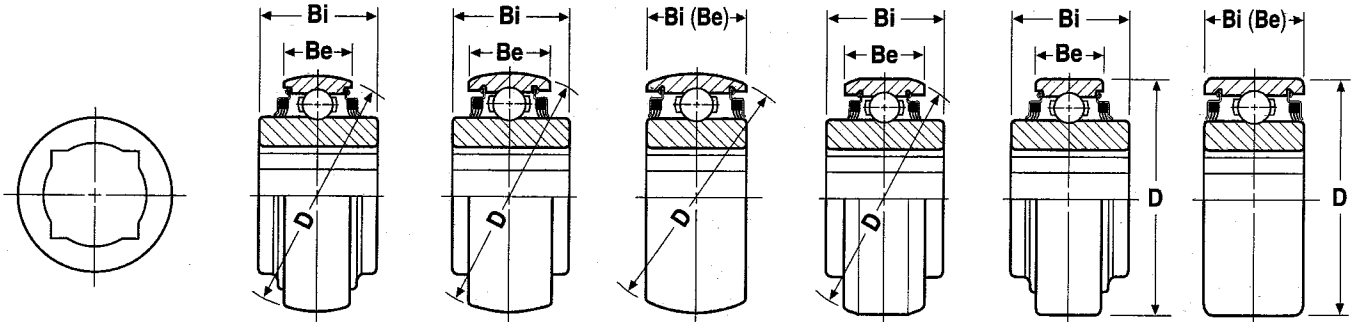


**R-3 TYPE SEAL
SPECIAL ORDER**



A&L Unit Number	Shaft Dia. d	DIMENSIONS								Load Rating		Weight lbs	
		D	B	C	S	S1	G	h	ds	Basic (lbf)	Static (lbf)		
UCX05-14	7/8												0.93
UCX05-15	15/16	62	38.1	19	15.9	22.2	6	5.3	1/4-28	3370	2250		0.90
UCX05	25mm	2.4409	1.5000	0.7480	0.6260	0.8740	0.2362	0.2087					0.86
UCX05-16	1												0.84
UCX06-18	1-1/8												1.32
UCX06-19	1-3/16	72	42.9	20	17.5	35.4	6.5	5.7	5/16-24	4450	6034		1.28
UCX06-20	1-1/4	2.8346	1.6890	0.7874	0.6890	1.3937	0.2559	0.2244					1.26
UCX06	30mm												1.21
UCX07-22	1-3/8	80	49.2	21	19	30.2	8	6.3	5/16-24	5030	3530		1.65
UCX07	35mm	3.1496	1.9370	0.8268	0.7480	1.1890	0.3150	0.2480					1.63
UCX07-23	1-7/16												1.58
UCX08-24	1-1/2	85	49.2	22	19	30.2	8	6.8	5/16-24	5665	4010		1.92
UCX08	40mm	3.3465	1.9370	0.8661	0.7480	1.1890	0.3150	0.2677					1.83
UCX09-26	1-5/8												2.32
UCX09-27	1-11/16	90	51.6	23	19	32.6	9	6.7	3/8-24	6020	4450		2.23
UCX09-28	1-3/4	3.5433	2.0315	0.9055	0.7480	1.2835	0.3543	0.2638					2.14
UCX09	45mm												2.08
UCX10-30	1-7/8												3.02
UCX10-31	1-15/16	100	55.6	25	22.2	33.4	9	7.2	3/8-24	7450	5620		2.91
UCX10	50mm	3.9370	2.1890	0.9843	0.8740	1.3150	0.3543	0.2835					2.84
UCX10-32	2												2.78
UCX11-34	2-1/8												4.06
UCX11	55mm	110	65.1	27	25.4	39.7	10.5	8.2	3/8-24	8995	6955		3.97
UCX11-35	2-3/16	4.3307	2.5630	1.0630	1.0000	1.5630	0.4134	0.3228					3.92
UCX11-36	2-1/4												3.75
UCX12	60mm	120	65.1	28	25.4	39.7	12	8	7/16-20	9830	7650		4.52
UCX12-38	2-3/8	4.7244	2.5630	1.1024	1.0000	1.5630	0.4724	0.3150					4.48
UCX12-39	2-7/16												4.30
UCX13-40	2-1/2	125	74.6	30	30.2	44.4	12	9	7/16-20	10690	8400		4.75
UCX13	65mm	4.9213	2.9370	1.1811	1.1890	1.7480	0.4724	0.3543					4.56
UCX14-44	2-3/4	130	77.8	30	33.3	44.5	12	9	7/16-20	11440	9240		6.06
UCX14	70mm	5.1181	3.0630	1.1811	1.3110	1.7520	0.4724	0.3543					6.02
UCX15	75mm	140	82.6	33	33.3	49.3	14	10.2	7/16-20	12480	10010		7.52
UCX15-47	2-15/16	5.5118	3.2520	1.2992	1.3110	1.9409	0.5512	0.4016					7.42
UCX15-48	3												7.32
UCX16	80mm	150	85.7	35	34.1	51.6	14	11	7/16-20	14370	11930		8.53
		5.9055	3.3740	1.3780	1.3425	2.0315	0.5512	0.4331					
UCX17-52	3-1/4	160	96	37	39.7	56.3	15	12	7/16-20	16510	13600		11.66
UCX17	85mm	6.2992	3.7795	1.4567	1.5630	2.2165	0.5906	0.4724					11.10
UCX18-56	3-1/2	170	104	40	42.9	61.1	16	13	7/16-20	18850	15650		13.5
UCX18	90mm	6.6929	4.0945	1.5748	1.6890	2.4055	0.6299	0.5118					13.2
UCX20	100mm	190	117.5	43	49.2	68.3	18	14	5/8-18	23040	20060		18.9
UCX20-63	3-15/16	7.4803	4.6260	1.6929	1.9370	2.6890	0.7087	0.5512					18.5
UCX20-64	4												18.4

Disc Harrow Bearings



TYPE 1

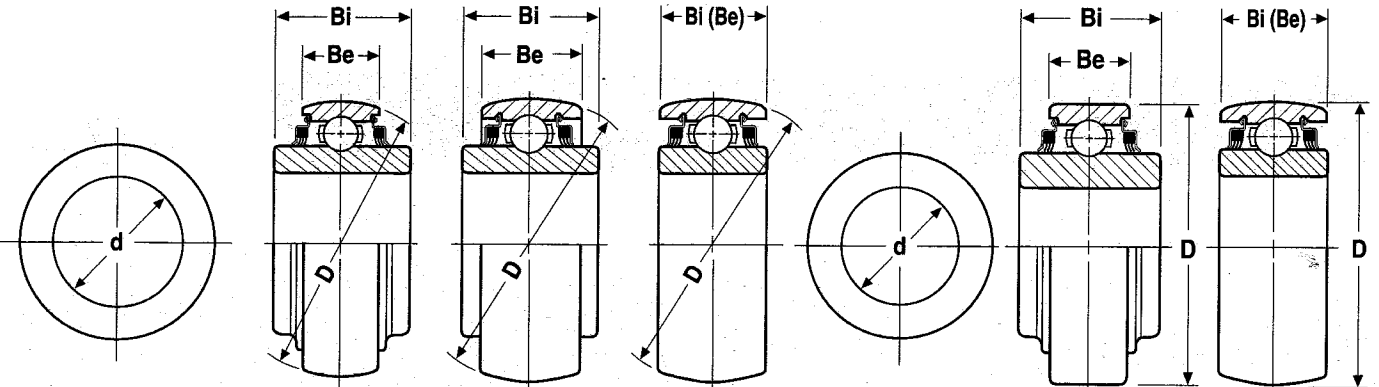
TYPE 2

TYPE 3

TYPE 4

TYPE 5

TYPE 6



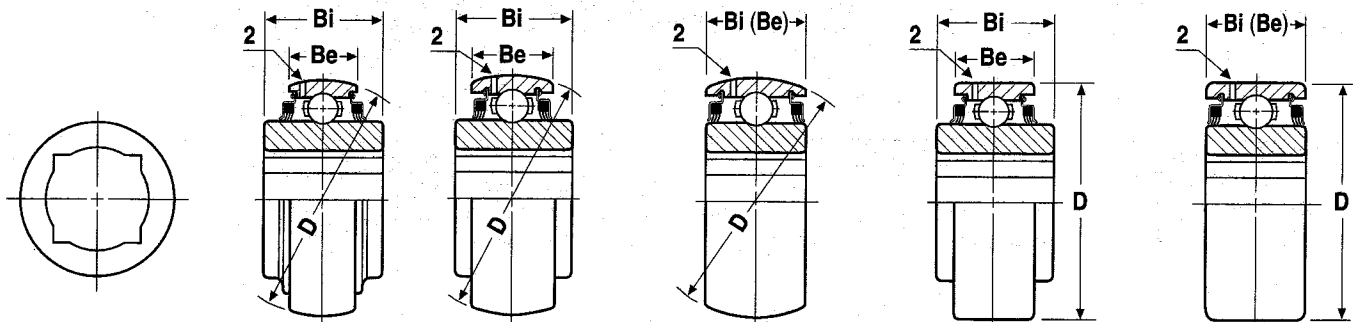
TYPE 7

TYPE 8

TYPE 9

TYPE 10

TYPE 11



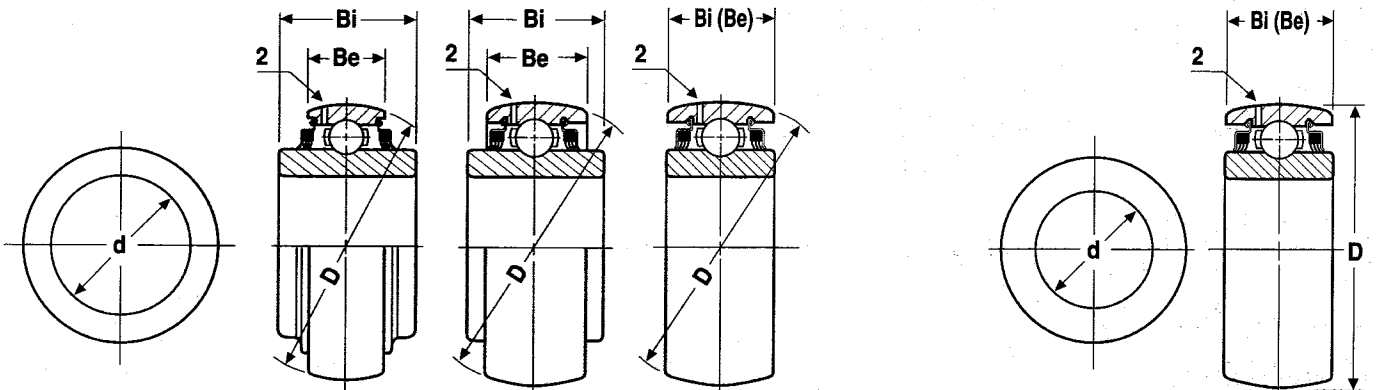
TYPE 12

TYPE 13

TYPE 14

TYPE 15

TYPE 16



TYPE 17

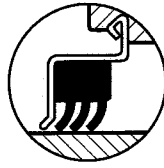
TYPE 18

TYPE 19

TYPE 20

Disc Harrow Bearings

NON-RELUBRICATABLE SERIES



R-3 TYPE SEAL

MOLDED TRIPLE LIP SEAL

W200PP SERIES - SPHERICAL O.D. TYPE

A&L Bearing Number	Type *	Round Bore Diameter Inches	Square Shaft Size Inches	Outer Diameter D		Inner Bi Inches	Ring Widths		Dynamic Load Rating C lbs	Weight	
				mm	Inches		mm	Inches		kg	lbs
W208PPB2	7	1.5005		80	3.1496	1.689	18	0.709	5070	0.72	1.59
W208PPB4	9	1.1880		80	3.1496	1.189		1.189	5070	0.72	1.58
W208PPB5	1		1-1/8	80	3.1496	1.437	18	0.709	5070	0.67	1.47
W208PPB6	1		1	80	3.1496	1.437	18	0.709	5070	0.72	1.59
W208PPB7	7	1.1880		80	3.1496	1.189	18	0.709	5070	0.64	1.41
W208PPB8	2		1-1/8	80	3.1496	1.437		1.189	5070	0.75	1.66
W208PPB9	2		1	80	3.1496	1.437		1.189	5070	0.79	1.74
W208PPB11	4		7/8		3.4380	1.437		1.189	5070	0.93	2.05
W208PPB12	4		1-1/8		3.4380	1.437		1.189	5070	0.85	1.87
W208PPB13	1		7/8	80	3.1496	1.437	18	0.709	5070	0.73	1.62
W208PPB19	4		1-1/8		3.4385	1.437		1.189	5070	0.85	1.87
W208PPB23	8	1.5005		80	3.1496	1.689		1.189	5070	0.68	1.50
W209PPB2	9	1.7717		85	3.3465	1.189		1.189	5660	0.65	1.44
W209PPB4	9	1.5350		85	3.3465	1.189		1.189	5660	0.75	1.65
W209PPB5	2		1-1/4	85	3.3465	1.437		1.189	5660	0.79	1.75
W209PPB7	4		1-1/4		3.4380	1.437		1.189	5660	0.84	1.85
W209PPB8	1		1-1/4	85	3.3465	1.437	19	0.748	5660	0.75	1.65
W209PPB11	7	1.7811		85	3.3465	1.437	22	0.866	5660	0.64	1.41
W210PPB2	9	1.9380		90	3.5433	1.189		1.189	6080	0.71	1.58
W210PPB4	3		1-1/8	90	3.5433	1.189		1.189	6080	0.96	2.11
W210PPB5	9	1.7850		90	3.5433	1.189		1.189	6080	0.79	1.75
W210PPB6	2		1-1/8	90	3.5433	1.437		1.189	6080	1.02	2.25
W210PPB9	—	1.9450		90	3.5433	1.438	23	0.906	6080	—	—
W211PPB2	9	2.1880		100	3.9370	1.311		1.311	7490	0.97	2.13
W211PPB3	3		1-1/2	100	3.9370	1.311		1.311	7490	1.21	2.66
W211PPB6	4		1-1/2		4.1250	1.750		1.437	7490	1.86	4.10

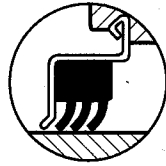
W200PP SERIES - CYLINDRICAL O.D. TYPE

A&L Bearing Number	Type *	Round Bore Diameter Inches	Square Shaft Size Inches	Outer Diameter D		Inner Bi Inches	Ring Widths		Dynamic Load Rating C lbs	Weight	
				mm	Inches		mm	Inches		kg	lbs
W208PP4	6	1.1180		80	3.1496	1.189		1.189	5070	0.76	1.68
W208PP5	5		1-1/8	80	3.1496	1.437	18	0.709	5070	0.68	1.50
W208PP6	5		1	80	3.1496	1.437	18	0.709	5070	0.73	1.82
W208PP7	5	1.1180		80	3.1496	1.189	18	0.709	5070	0.65	1.43
W208PP8	5		1-1/8	80	3.1496	1.437		1.189	5070	0.75	1.66
W208PP10	10	1.5005		80	3.1496	1.689	21	0.827	5070	0.68	1.50
W210PP2	11	1.9380		90	3.5433	1.189		1.189	6080	0.77	1.69
W210PP4	6		1-1/8	90	3.5433	1.189		1.189	6080	0.87	1.92
W211PP2	11	2.1880		100	3.9370	1.311		1.311	7490	1.06	2.33
W211PP3	6		1-1/2	100	3.9370	1.311		1.311	7490	1.27	2.79
W211PP5	5		1-1/2		4.000	1.750		1.437	7490	1.80	3.97

NOTE: See page 50 for drawings

Disc Harrow Bearings

RELUBRICATABLE SERIES



R-3 TYPE SEAL

MOLDED TRIPLE LIP SEAL

GW200PPB SERIES - SPHERICAL O.D. TYPE

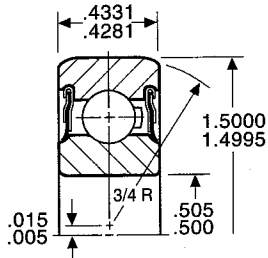
A&L Bearing Number	Type *	Round Bore Diameter Inches	Square Shaft Size Inches	Outer Diameter D		Ring Widths		Dynamic Load Rating C lbs	Weight	
				mm	Inches	Inner Bi Inches	Outer Be Inches		kg	lbs
GW208PPB5	12		1 - 1/8	80	3.1496	1.437	24 0.945	5070	0.67	1.47
GW208PPB6	12		1	80	3.1496	1.437	24 0.945	5070	0.79	1.75
GW208PPB8	13		1 - 1/8	80	3.1496	1.437	1.189	5070	0.79	1.75
GW209PPB2	19	1.7717		85	3.3465	1.189	1.189	5660	0.65	1.44
GW209PPB4	19	1.5350		85	3.3465	1.189	1.189	5660	0.75	1.65
GW209PPB5	13		1 - 1/4	85	3.3465	1.437	1.189	5660	0.85	1.87
GW209PPB8	12		1 - 1/4	85	3.3465	1.437	22 0.866	5660	0.75	1.65
GW209PPB11	17	1.781		85	3.3465	1.437	22 0.866	5660	0.62	1.37
GW210PPB2	19	1.9380		90	3.5433	1.189	1.189	6080	0.68	1.50
GW210PPB4	14		1 - 1/8	90	3.5433	1.189	1.189	6080	0.79	1.75
GW210PPB5	19	1.7850		90	3.5433	1.189	1.189	6080	0.79	1.75
GW211PPB2	19	2.1880		100	3.9370	1.311	1.311	7490	1.19	2.62
GW211PPB3	14		1 - 1/2	100	3.9370	1.311	1.311	7490	1.21	2.66
GW211PPB6	17	2.1880		100	3.9370	1.311	25 0.984	7490	0.84	1.85
GW211PPB9	17	2.194		100	3.9370	1.311	25 0.984	7490	0.92	2.02
GW211PPB10	19	1.9380		100	3.9370	1.311	1.311	7490	1.02	2.26
GW211PPB11	12		1 - 1/2	100	3.9370	1.750	25 0.984	7490	1.02	2.26
GW211PPB13	17	1.785		100	3.9370	1.311	25 0.984	7490	0.92	2.02
GW211PPB14	17	2.015		100	3.9370	1.311	25 0.984	7490	0.91	2.00

GW200PP SERIES - CYLINDRICAL O.D. TYPE

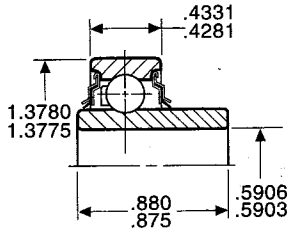
A&L Bearing Number	Type *	Round Bore Diameter Inches	Square Shaft Size Inches	Outer Diameter D		Ring Widths		Dynamic Load Rating C lbs	Weight	
				mm	Inches	Inner Bi Inches	Outer Be Inches		kg	lbs
GW208PP17	15		1-1/8		3.3755	1.437	1.189	5070	0.93	2.04
GW210PP4	16		1-1/8	90	3.5433	1.189	1.189	6080	1.05	2.31
GW211PP2	20	2.1880		100	3.9370	1.311	1.311	7490	1.36	3.00
GW211PP3	16		1-1/2	100	3.9370	1.311	1.311	7490	1.77	2.79
GW211PP5	—		1-1/2		4.0000	1.750	1.438	7490	—	—
GW211PP17	15		1-1/2	100	3.9370	1.750	1.311	7490	1.95	4.29

NOTE: See page 50 for drawings

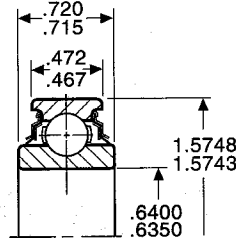
Agricultural Bearings



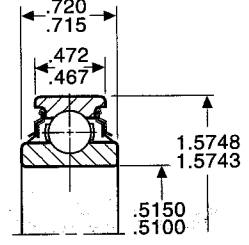
202NPP9



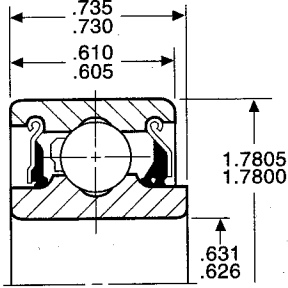
202RRE



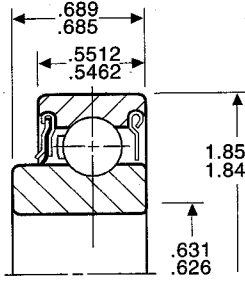
203KRR2



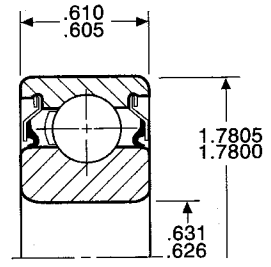
203KRR5



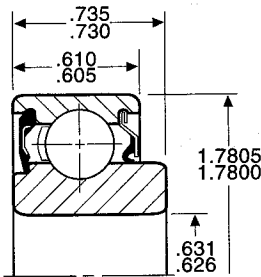
204RY2



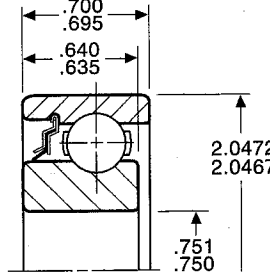
204KRD4



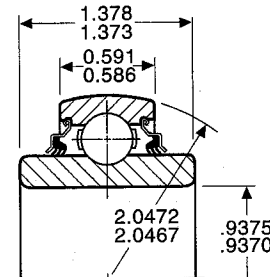
204KRR8



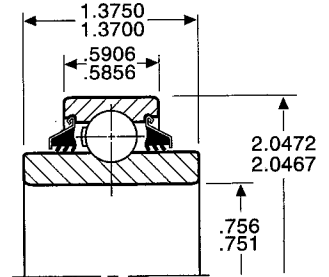
204FREN



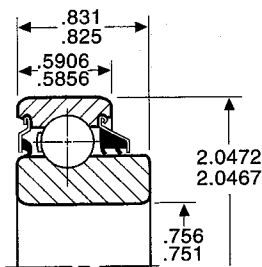
205KR3



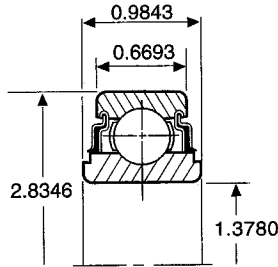
205PPB7



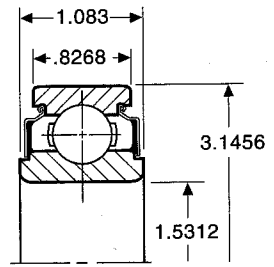
205NPP-9



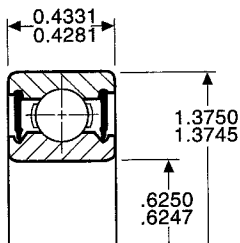
205RVA



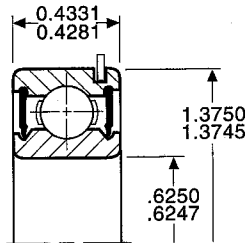
88107



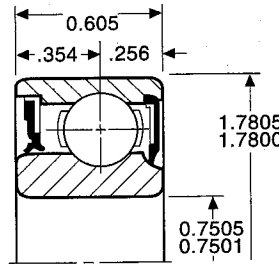
88128



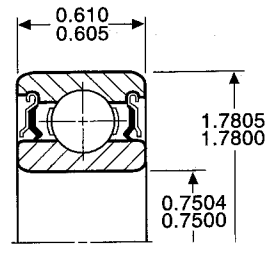
99502H



499502H



Z9504AB



Z9504RST

Stem / Water Pump Style Bearings

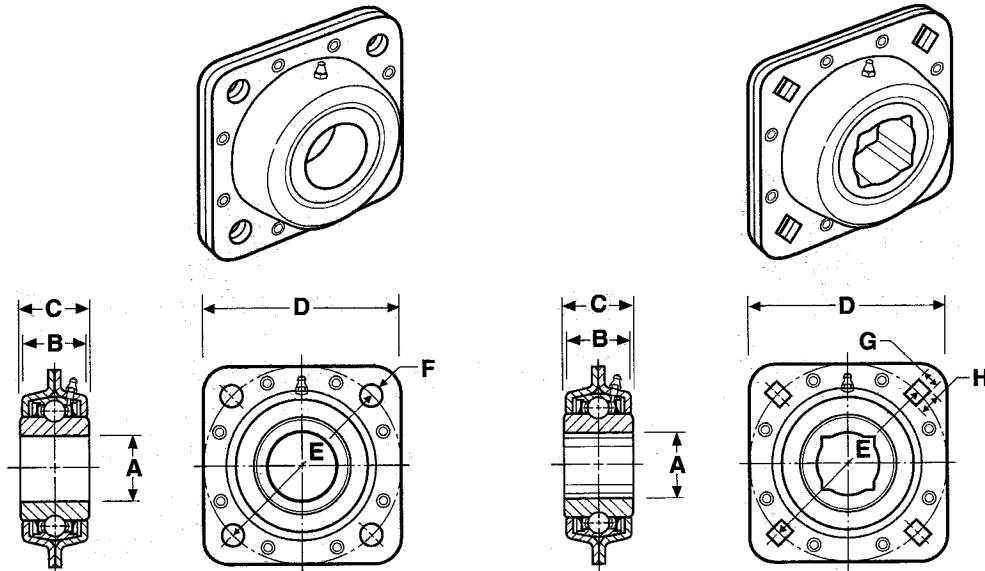
CULTIVATOR, PLANTER, DISK, DO-ALL IMPLEMENT

A&L Unit Number	Replaces & Description	
885151E	Case T26882 IHC 526769R91 Glenco P3573 Long Stem Cultivator Bearing	
885154B	John Deere AN 131668 Massey Ferguson 446612MI Allis Chalmers: 593891, 70593591 Short Stem Cultivator Bearing	
885152	John Deere AA21015-AA35741 IHC 128558C91 Press Wheel & Closing Wheel To Fit John Deere 7000-7100 Planter To Fit IHC 800 Planter Short Stem Cultivator Bearing with Hole	
885118B	Glenco P6310 Massey Ferguson 421855MI Double Stem Cultivator Bearing	
DC2207F	Double Stem Bearing For Dickey Cultivator End Drilled & Tapped	

4-Bolt Disc Harrow Units

TRIPLE LIP SEALS

These units incorporate a Tri-Ply relubricatable bearing mounted in two stampings, riveted together with two rubber "O" rings to reduce contamination.

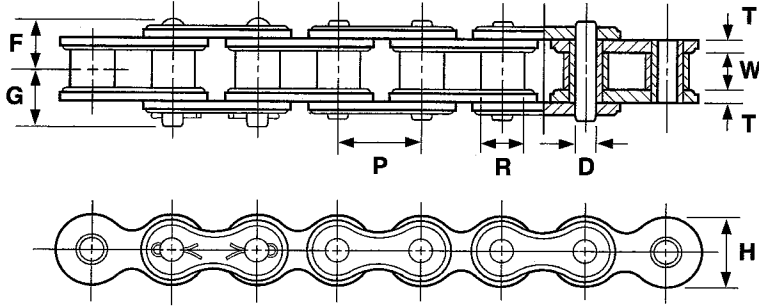


These precision flanged bearings are designed to keep grease in and dirt and contaminants out. They are used on a large variety of implements, making them one of our most popular bearings. These Disc Harrow Bearings are mounted and riveted in a square stamped steel flange.

A&L Unit Dia. / Type Number	Shaft	DIMENSIONS (In Inches)							Bolt Hole Shape
		A	B	C	D	E	F	G	
FD209RA (ST491A)	1-3/4 ROUND	1.6400	1.6870	5.0000	5.0000	0.531	*	*	RND
FD209B (ST491B)	1-1/2 ROUND	1.6400	1.6870	5.0000	5.0000	*	0.531	0.687	RDN
FD209RM (ST209 x 1-1/8)	1-1/8 SQUARE	1.6400	1.6870	5.0000	5.0000	*	0.531	0.687	SQ
FD211RB (ST211 x 2-3/8)	2-3/16 ROUND	1.7990	2.1870	5.5000	5.5000	0.531	*	*	RND
*FD211RJA (ST211 x 1-15/16)	1-15/16 ROUND *W/CAM	1.7990	2.1250	5.5000	5.5000	0.531	*	*	RND

* Order Parts Number C115 for Lock Ring.

ANSI Roller Chain



ANSI STANDARD ROLLER CHAINS

Dimensions in inches

A&L Unit Number	ANSI No.	Pitch		Roller			Plate		Pin Diameter D	Overall Width		Ultimate Strength lbs	Weight Per Foot lbs
		P	P	Width W	Diam. R	Height H	Thickness T	F		G			
25	25	1/4	0.250	1/8	0.125	0.130	.230	0.030	0.0905	0.152	0.183	925	0.09
35	35	3/8	0.375	3/16	0.188	0.200	.340	0.050	0.141	0.230	0.284	2,100	0.24
41	41	1/2	0.500	1/4	0.250	0.306	.386	0.050	0.141	0.265	0.322	2,000	0.29
40	40	1/2	0.500	5/16	0.312	0.312	.463	0.060	0.156	0.320	0.375	3,700	0.42
50	50	5/8	0.625	3/8	0.375	0.400	.579	0.080	0.200	0.401	0.450	6,100	0.71
60	60	3/4	0.750	1/2	0.500	0.469	.673	0.094	0.234	0.500	0.549	8,500	0.97
80	80	1	1.000	5/8	0.625	0.625	.935	0.125	0.312	0.636	0.750	14,500	1.68
100	100	1-1/4	1.250	3/4	0.750	0.750	1.165	0.156	0.375	0.794	0.910	24,000	2.54
120	120	1-1/2	1.500	1	1.000	0.875	1.378	0.187	0.437	0.995	1.127	34,000	3.73
140	140	1-3/4	1.750	1	1.000	1.000	1.661	0.218	0.500	1.075	1.194	46,000	4.83
160	160	2	2.000	1-1/4	1.250	1.125	1.898	0.250	0.562	1.275	1.416	58,000	6.56
180	180	2-1/4	2.250	1-13/32	1.406	1.406	2.135	0.281	0.687	1.390	1.560	76,000	9.08
200	200	2-1/2	2.500	1-1/2	1.500	1.562	2.374	0.312	0.781	1.570	1.727	95,000	10.49
240	240	3	3.000	1-7/8	1.875	1.875	2.805	0.375	0.937	1.850	2.200	130,000	16.36

ANSI HEAVY SERIES CHAINS

Dimensions in inches

A&L Unit Number	ANSI No.	Pitch		Roller			Plate		Pin Diameter D	Overall Width		Ultimate Strength lbs	Weight Per Foot lbs
		P	P	Width W	Diam. R	Height H	Thickness T	F		G			
60H	60H	3/4	0.750	1/2	0.500	0.469	.673	0.125	0.234	0.586	0.662	8,500	1.20
80H	80H	1	1.000	5/8	0.625	0.625	.935	0.156	0.312	0.699	0.813	14,500	1.96
100H	100H	1-1/4	1.250	3/4	0.750	0.750	1.165	0.187	0.375	0.828	0.969	24,000	2.80
120H	120H	1-1/2	1.500	1	1.000	0.875	1.378	0.218	0.437	1.032	1.202	34,000	4.00
140H	140H	1-3/4	1.750	1	1.000	1.000	1.661	0.250	0.500	1.110	1.281	46,000	5.40
160H	160H	2	2.000	1-1/4	1.250	1.125	1.898	0.281	0.562	1.297	1.531	58,000	7.09
180H	180H	2-1/4	2.250	1-13/32	1.406	1.406	2.135	0.312	0.687	1.440	1.630	79,500	9.49
200H	200H	2-1/2	2.500	1-1/2	1.500	1.562	2.374	0.375	0.781	1.651	2.015	110,000	13.54

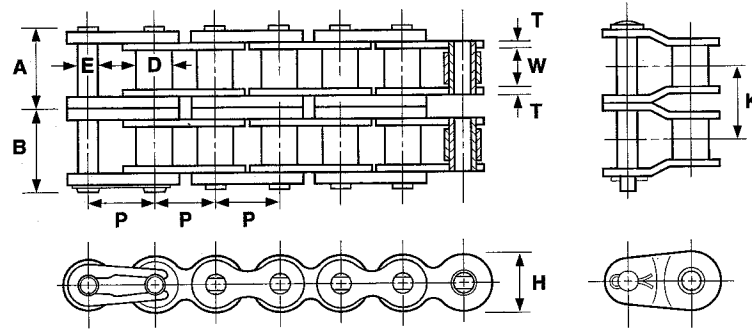
ROLLER CHAIN TOOL (For Pin Removal)

Tool Number	Roller Chain sizes		Weight lbs.
	Nos.	Pitches Inclusive	
CB25-60	25 thru 60	1/4 to 5/8	.61
CB60-100	60 thru 100	3/4 to 1-1/4	1.50
CB120-160	120 thru 160	1-1/2 to 2	8.30

CHAIN PULLERS (For Installing Roller Chain)

Puller Number	Chain Size	Jaw Spread	Weight
CH35-60	No. 35 - 60	2"	5 oz.
CH60-160	No. 60 - 160	3 1/2"	1 lb.

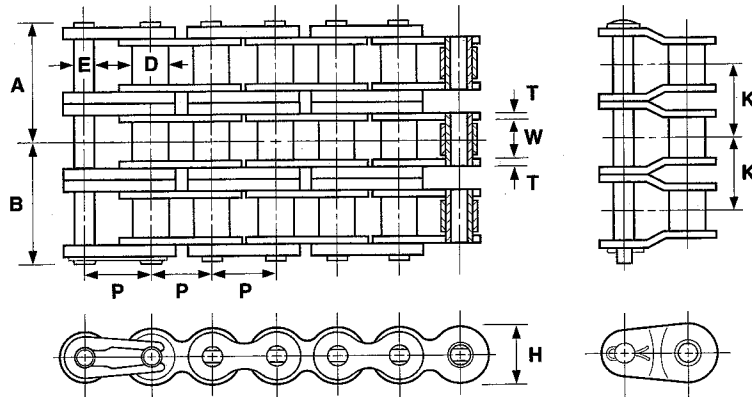
ANSI Roller Chain



DOUBLE STRAND CHAINS

Dimensions in inches

A&L Unit Number	Pitch P	Roller		Riv End to Center Line A	Conn. End to Center Line B	Pin Diameter E	Link Plate		Traverse Pitch K	Average Ultimate Strength lbs	Average Weight Per Foot lbs
		Width W	Diameter D				Height H	Thickness T			
35-2	0.375	0.188	0.200	0.429	0.469	0.141	.340	0.050	0.399	5,000	0.46
40-2	0.500	0.313	0.313	0.602	0.645	0.156	.463	0.060	0.566	8,400	0.85
50-2	0.625	0.375	0.400	0.756	0.815	0.200	.579	0.080	0.713	14,000	1.37
60-2	0.750	0.500	0.469	0.945	1.016	0.234	.673	0.094	0.897	19,400	2.04
80-2	1.000	0.625	0.625	1.217	1.326	0.312	.935	0.125	1.153	29,000	3.41
100-2	1.250	0.750	0.750	1.485	1.590	0.375	1.165	0.156	1.408	51,200	5.28
120-2	1.500	1.000	0.875	1.870	1.996	0.437	1.425	0.187	1.789	69,400	7.88
140-2	1.750	1.000	1.000	2.018	2.161	0.500	1.661	0.219	1.924	91,400	10.03
160-2	2.000	1.250	1.125	2.397	2.587	0.562	1.898	0.250	2.305	114,800	13.48
180-2	2.250	1.406	1.406	2.680	2.870	0.687	2.135	0.281	2.592	158,000	17.65
200-2	2.500	1.500	1.562	2.956	3.213	0.781	2.374	0.312	2.817	204,000	21.95
240-2	3.000	1.875	1.875	3.594	3.960	0.937	2.850	0.375	3.458	300,000	32.44

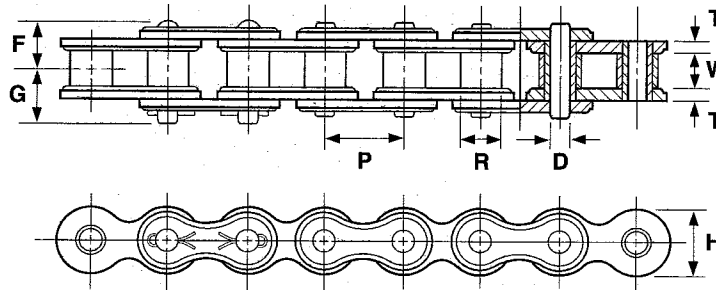


TRIPLE STRAND CHAINS

Dimensions in inches

A&L Unit Number	Pitch P	Roller		Riv End to Center Line A	Conn. End to Center Line B	Pin Diameter E	Link Plate		Traverse Pitch K	Average Ultimate Strength lbs	Average Weight Per Foot lbs
		Width W	Diameter D				Height H	Thickness T			
35-3	0.375	0.188	0.200	0.629	0.665	0.141	.340	0.050	0.399	7,500	0.70
40-3	0.500	0.313	0.313	0.885	0.928	0.156	.463	0.060	0.566	12,600	1.27
50-3	0.625	0.375	0.400	1.110	1.174	0.200	.579	0.080	0.713	21,000	2.05
60-3	0.750	0.500	0.469	1.394	1.472	0.234	.673	0.094	0.897	29,100	3.02
80-3	1.000	0.625	0.625	1.793	1.904	0.312	.935	0.125	1.153	50,310	5.10
100-3	1.250	0.750	0.750	2.187	2.297	0.275	1.165	0.156	1.408	76,800	7.92
120-3	1.500	1.000	0.875	2.764	2.890	0.437	1.425	0.187	1.789	104,100	11.80
140-3	1.750	1.000	1.000	2.972	3.130	0.500	1.661	0.219	1.924	137,100	15.00
160-3	2.000	1.250	1.125	3.547	3.740	0.562	1.898	0.250	2.305	172,200	20.20
180-3	2.250	1.406	1.406	3.940	4.170	0.687	2.135	0.281	2.592	239,000	26.50
200-3	2.500	1.500	1.562	4.358	4.630	0.781	2.374	0.312	2.817	306,000	32.74
240-3	3.000	1.875	1.875	5.315	5.693	0.937	2.850	0.375	3.458	450,600	48.19

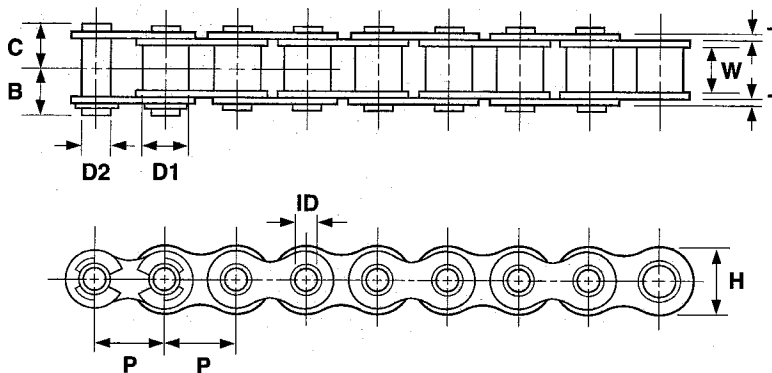
ANSI Roller Chain



NON-STANDARD ROLLER CHAINS

Dimensions in inches

A&L Unit Number	Pitch P		Roller			Plate		Pin Diameter D	Overall Width		Average Ultimate Strength lbs	Average Weight Per Foot lbs
			Width W	Diam. R	Height H	Thickness T	F		G			
410	1/2	0.500	1/8	0.125	0.306	0.382	0.039	0.143	0.184	0.233	1,900	0.19
415	1/2	0.500	3/16	0.188	0.306	0.382	0.043	0.143	0.218	0.266	2,100	0.24
415H	1/2	0.500	3/16	0.188	0.306	0.469	0.060	0.156	0.258	0.305	3,700	0.33
420	1/2	0.500	1/4	0.250	0.306	0.469	0.060	0.156	0.288	0.338	3,700	0.38
423	1/2	0.500	1/4	0.250	0.335	0.469	0.060	0.177	0.288	0.338	4,600	0.42
428	1/2	0.500	5/16	0.312	0.335	0.469	0.060	0.177	0.320	0.369	4,600	0.44
428H	1/2	0.500	5/16	0.313	0.335	0.472	0.080	0.177	0.366	0.409	5,300	0.55
520	5/8	0.625	1/4	0.250	0.400	0.583	0.080	0.200	0.339	0.387	6,100	0.64
525	5/8	0.625	5/16	0.312	0.400	0.583	0.080	0.200	0.369	0.418	6,100	0.68
630	3/4	0.750	3/8	0.375	0.469	0.693	0.094	0.234	0.438	0.538	8,500	0.87

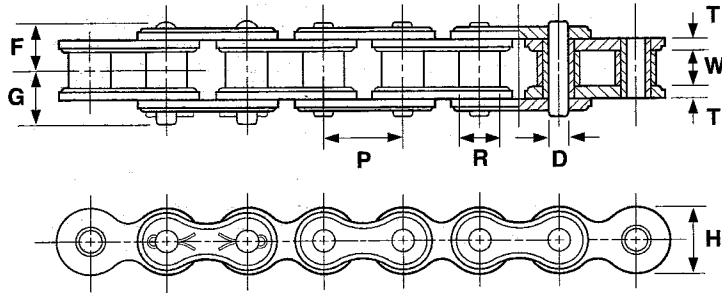


SINGLE STRAND HOLLOW PIN

Dimensions in inches

A&L Unit Number	Pitch P	Bushing		Pin		Overall Width		Plate		Average Ultimate Strength lbs	Average Weight Per Foot lbs
		Width W	Diameter D1	Diameter D2	Ins. Diam. ID	Rivet C	Over C/L B	Height H	Thickness T		
40H.P.	1/2	5/16	.312	.223	.157	.319	.358	.463	.059	2,700	.36
50H.P.	5/8	3/8	.400	.286	.202	.394	.453	.579	.077	4,500	.58
60H.P.	3/4	1/2	.469	.331	.237	.492	.547	.673	.094	6,100	.86
80H.P.	1	5/8	.625	.449	.316	.638	.695	.935	.125	11,400	1.48

ANSI Roller Chain



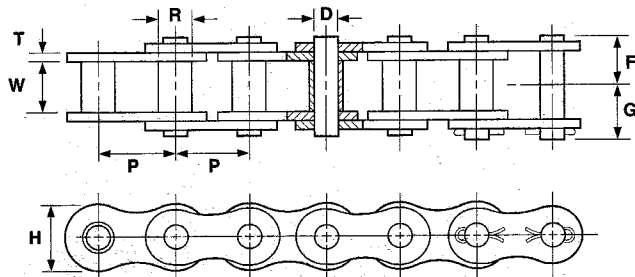
SINGLE STRAND "304" SERIES STAINLESS STEEL

Dimensions in inches

A&L Unit Number	ANSI No.	Pitch P	Roller			Plate		Pin Diameter D	Overall Width		Average Ultimate Strength lbs	Average Weight Per Foot lbs	
			Width W	Diam. R	Height H	Thickness T	F		G				
25SS	25SS	1/4	0.250	1/8	0.125	0.130	.230	0.030	0.0905	0.152	0.183	520	0.09
35SS	35SS	3/8	0.375	3/16	0.188	0.200	.340	0.050	0.141	0.230	0.284	1,600	0.24
40SS	40SS	1/2	0.500	5/16	0.312	0.312	.463	0.060	0.156	0.320	0.375	2,560	0.42
50SS	50SS	5/8	0.625	3/8	0.375	0.400	.579	0.080	0.200	0.401	0.450	4,250	0.71
60SS	60SS	3/4	0.750	1/2	0.500	0.469	.673	0.094	0.234	0.500	0.549	6,120	0.97
80SS	80SS	1	1.000	5/8	0.625	0.625	.935	0.125	0.312	0.636	0.750	10,700	1.68
100SS	100SS	1-1/4	1.250	3/4	0.750	0.750	1.165	0.156	0.375	0.794	0.910	12,100	2.54

SINGLE STRAND NICKEL PLATED CHAINS

A&L Unit Number	ANSI No.	Pitch P	Roller			Plate		Pin Diameter D	Overall Width		Average Ultimate Strength lbs	Average Weight Per Foot lbs	
			Width W	Diam. R	Height H	Thickness T	F		G				
25NP	25NP	1/4	0.250	1/8	0.125	0.130	.230	0.030	0.0905	0.152	0.183	925	0.09
35NP	35NP	3/8	0.375	3/16	0.188	0.200	.340	0.050	0.141	0.230	0.284	2,100	0.24
41NP	41NP	1/2	0.500	1/4	0.250	0.306	.386	0.050	0.141	0.265	0.322	2,000	0.29
40NP	40NP	1/2	0.500	5/16	0.312	0.312	.463	0.060	0.156	0.320	0.375	3,700	0.42
50NP	50NP	5/8	0.625	3/8	0.375	0.400	.579	0.080	0.200	0.401	0.450	6,100	0.71
60NP	60NP	3/4	0.750	1/2	0.500	0.469	.673	0.094	0.234	0.500	0.549	8,500	0.97
80NP	80NP	1	1.000	5/8	0.625	0.625	.935	0.125	0.312	0.636	0.750	14,500	1.68

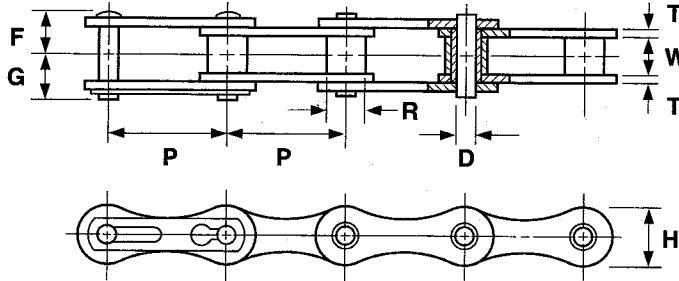


ROLLERLESS CHAINS

Dimensions in inches

A&L Unit Number	Pitch P	Bushing		Plate		Pin Diameter D	Overall Width		Average Ultimate Strength lbs	Average Weight Per Foot lbs
		Width W	Diam. R	Height H	Thickness T		F	G		
55R	5/8	3/8	.375	.272	.579	.080	.401	.450	6,100	.57
65R	3/4	1/2	.500	.330	.673	.094	.500	.549	8,500	.78
85R	1	5/8	.625	.447	.935	.125	.636	.750	14,500	1.45

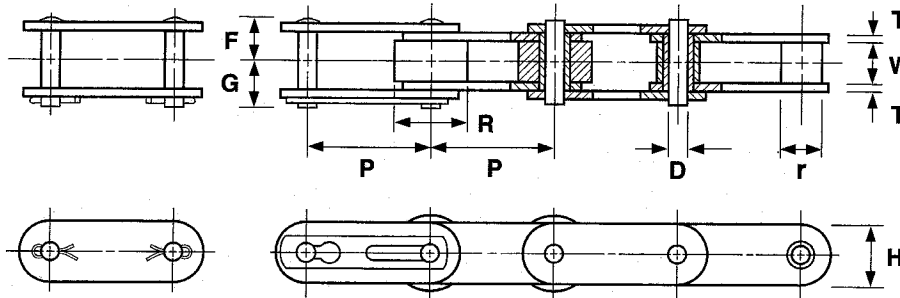
ANSI Roller Chain



AGRICULTURAL TYPE CHAINS

Dimensions in inches

A&L Unit Number	ANSI No.	Pitch P	Roller		Plate		Pin Diameter D	Overall Width		Average Ultimate Strength lbs	Average Weight Per Foot lbs
			Width W	Diam. R	Height H	Thickness T		Riveted F	Cottered G		
A-2040	A-2040	1	5/16	0.312	.463	0.060	0.156	0.320	0.375	3,700	0.30
A-2050	A-2050	1-1/4	3/8	0.400	.593	0.080	0.200	0.401	0.450	6,100	0.50
A-2060	A-2060	1-1/2	1/2	0.469	.683	0.094	0.234	0.500	0.549	8,500	0.70
A-2080	A-2080	2	5/8	0.625	.935	0.125	0.312	0.636	0.750	14,500	1.22

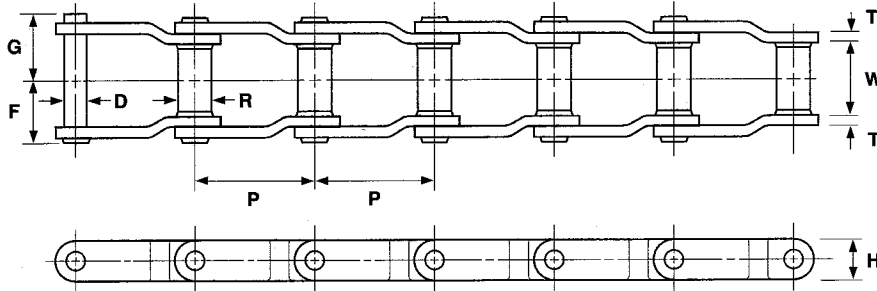


CONVEYOR TYPE CHAINS

Dimensions in inches

A&L Unit Number	ANSI No.	Pitch P	Roller		Plate		Pin Diameter D	Overall Width		Average Ultimate Strength lbs	Average Weight Per Foot lbs
			Width W	Diam. R	Height H	Thickness T		Riveted F	Cottered G		
C-2040	C-2040	1	5/16	0.312	.463	0.060	0.156	0.320	0.377	3,700	0.34
C-2042	C-2042	1	5/16	0.625	.463	0.060	0.156	0.320	0.377	3,700	0.58
C-2050	C-2050	1-1/4	3/8	0.400	.593	0.080	0.200	0.403	0.453	6,100	0.56
C-2052	C-2052	1-1/4	3/8	0.750	.593	0.080	0.200	0.403	0.453	6,100	0.88
C-2060H	C-2060H	1-1/2	1/2	0.469	.683	0.125	0.234	0.586	0.662	8,500	1.01
C-2062H	C-2062H	1-1/2	1/2	0.875	.683	0.125	0.234	0.586	0.662	8,500	1.48
C-2080H	C-2080H	2	5/8	0.625	.935	0.156	0.312	0.699	0.813	14,500	1.67
C-2082H	C-2082H	2	5/8	1.125	.935	0.156	0.312	0.699	0.813	14,500	2.40
C-2100H	C-2100H	2-1/2	3/4	0.750	1.121	0.187	0.375	0.833	0.947	24,000	2.41
C-2102H	C-2102H	2-1/2	3/4	1.561	1.121	0.187	0.375	0.833	0.947	24,000	3.86
C-2120H	C-2120H	3	1	0.875	1.378	0.218	0.437	1.010	1.170	34,000	3.43
C-2122H	C-2122H	3	1	1.750	1.378	0.218	0.437	1.010	1.170	34,000	5.40
C-2160H	C-2160H	4	1-1/4	1.125	1.898	0.281	0.562	1.310	1.490	58,000	6.17
C-2162H	C-2162H	4	1-1/4	2.250	1.898	0.281	0.562	1.310	1.490	58,000	9.15

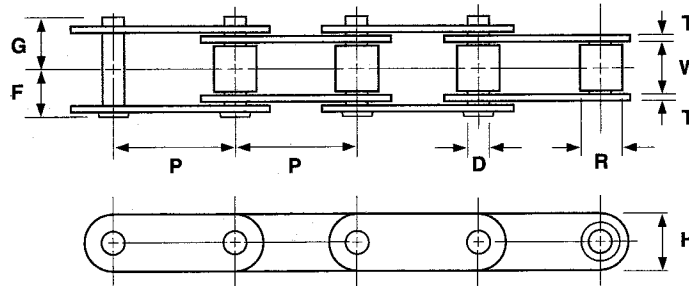
Special Chain



WELDED STEEL

Dimensions in inches

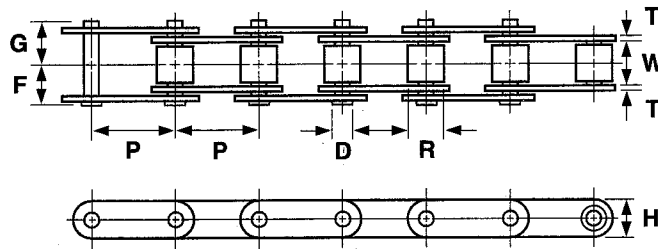
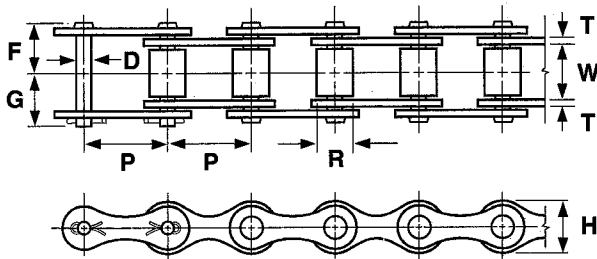
A&L Unit Number	Pitch P	Bushing		Plate		Pin Diameter D	Overall Width		Min. Tensile Strength		Average Weight Per Foot lbs
		Width W	Diam. R	Height H	Thickness T		F	G	Pin Ht. Treated	Pin Ht. Treated	
WR 78	2.609	1.125	.875	1.120	.250	.500	1.500	1.625	21,000	25,500	3.90



81 X LUMBER CHAIN

Dimensions in inches

A&L Unit Number	Pitch P	Roller		Plate		Pin Diameter D	Overall Width		Average Ultimate Strength lbs	Average Weight Per Foot lbs
		Width W	Diam. R	Height H	Thickness T		F	G		
81 X	2.609	1.062	.905	1.122	.156	.437	.937	1.125	27,500	2.40

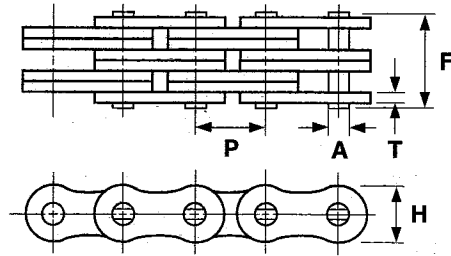


CA 550 AGRICULTURAL CHAINS

Dimensions in inches

A&L Unit Number	Pitch P	Roller		Plate		Pin Diameter D	Overall Width		Average Ultimate Strength lbs	Average Weight Per Foot lbs
		Width W	Diam. R	Height H	Thickness T		F	G		
A 550	1.630	.780	.656	.757	.105	.281	.681	.823	12,500	1.30
CA 550	1.630	.780	.656	.757	.105	.281	.681	.823	12,500	1.31
CA 555	1.630	.500	.656	.757	.125	.281	.586	.631	12,500	1.23
CA 557	1.630	.780	.700	.869	.125	.345	.722	.865	13,600	1.48

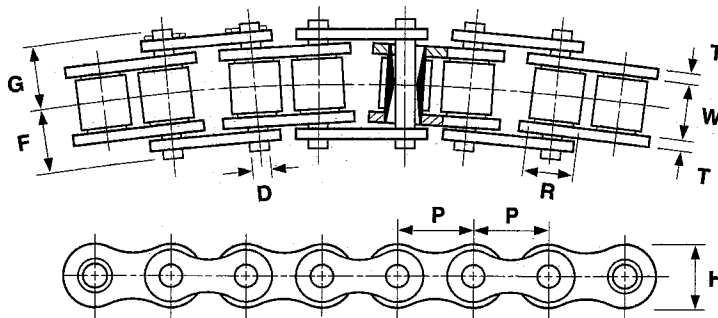
Special Chain



BL SERIES

Dimensions in inches

A&L Unit Number	Lacing	Pin		Plate Thickness T	Plate Height H (max)	Pitch P	Average Tensile Strength lbs	Average Weight Per Foot lbs
		Diameter A	Length Overall P					
BL-422	2 x 2	.200	.410	.080	.475	1/2	5,000	0.37
BL-423	2 x 3	.200	.498	.080	.475	1/2	5,700	0.48
BL-434	3 x 4	.200	.665	.080	.475	1/2	8,700	0.64
BL-444	4 x 4	.200	.750	.080	.475	1/2	10,000	0.75
BL-446	4 x 6	.200	.915	.080	.475	1/2	11,100	0.93
BL-466	6 x 6	.200	1.110	.080	.475	1/2	16,100	1.12
BL-522	2 x 2	.234	.480	.094	.594	5/8	7,600	0.58
BL-523	2 x 3	.234	.582	.094	.594	5/8	8,100	0.74
BL-534	3 x 4	.234	.777	.094	.594	5/8	12,100	1.03
BL-544	4 x 4	.234	.880	.094	.594	5/8	15,200	1.17
BL-546	4 x 6	.234	1.069	.094	.594	5/8	17,000	1.46
BL-566	6 x 6	.234	1.300	.094	.594	5/8	24,200	1.75
BL-622	2 x 2	.312	.630	.125	.712	3/4	11,100	0.92
BL-623	2 x 3	.312	.786	.125	.712	3/4	11,900	1.15
BL-634	3 x 4	.312	1.050	.125	.712	3/4	19,200	1.60
BL-644	4 x 4	.312	1.182	.125	.712	3/4	24,300	1.84
BL-646	4 x 6	.312	1.446	.125	.712	3/4	24,400	2.30
BL-666	6 x 6	.312	1.680	.125	.712	3/4	34,500	2.76
BL-822	2 x 2	.375	.780	.156	.950	1	20,400	1.51
BL-823	2 x 3	.375	.965	.156	.950	1	20,900	1.91
BL-834	3 x 4	.375	1.290	.156	.950	1	29,500	2.66
BL-844	4 x 4	.375	1.420	.156	.950	1	39,200	3.02
BL-846	4 x 6	.375	1.780	.156	.950	1	39,900	3.78
BL-866	6 x 6	.375	2.070	.156	.950	1	58,400	4.54



SIDEBOW CHAINS — TAPERED BUSHINGS

Dimensions in inches

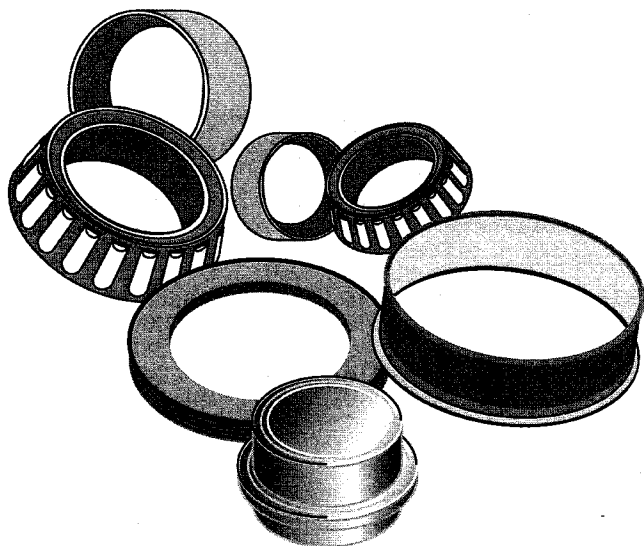
A&L Unit Number	Pitch P	Roller		Plate		Pin Diameter D	Overall Width		Min. Radius of Sidebow	Average Ultimate Strength lbs	Average Weight Per Foot lbs
		Width W	Diameter R	Height H	Thickness T		F	G			
40 S.B.	1/2	.312	.312	.469	.060	.156	.327	.379	14	3,300	.42
50 S.B.	5/8	.375	.400	.583	.080	.200	.409	.486	16	5,600	.71
60 S.B.	3/4	.500	.469	.693	.094	.234	.517	.592	20	7,700	.97
80 S.B.	1	.625	.625	.906	.125	.312	.656	.785	24	12,800	1.70

Interchange Information

AGRICULTURAL BEARINGS

A&L	FAFNIR	NDH	BCA	NTN
W208PPB2	W208PPB2	—	DS208TT2A	2AC08-1-1/2
W208PPB4	W208PPB4	—	DS208TT4	—
W208PPB5	W208PPB5	AS4508BJ	DS208TT5	1AS08-1-1/8
W208PPB6	W208PPB6	AS4508BK	DS209TT6	1AS08-1
W208PPB7	W208PPB7	—	DS208TT7	1AC081.3/16
W208PPB8	W208PPB8	AS4508EF	DS208TT8	2AS08-1-1/8
W208PPB9	W208PPB9	AS4508BE	DS208TT9	2AS08-1
W208PPB11	W209PPB11	AS4508FC	DS208TT11	4AS08-7/8
W208PPB12	W208PPB12	AS4508BC	DS208TT12B	4AS08-1-1/8
W208PPB13	W208PPB13	AS4508FF	DS208TT13	1AS08-7/8
W208PPB18	W208PPB18	AS4508H	DS209TT11A	4AS08-7/8
W208PPB19	W208PPB19	AS4508F	DS208TT12A	4AS08-1-1/8
W208PPB23	W208PPB23	—	—	—
W209PPB2	W209PPB2	AS4509BE	DS209TT2	3AC09
W209PPB4	W209PPB4	AS4509BD	DS209TT4	3AC09-1-1/2
W209PPB5	W209PPB5	AS4509A	DS209TT5	2AS09-1-1/4
W209PPB7	W209PPB7	AS4509AC	DS209TT7	4AS09-1-1/4
W209PPB8	W209PPB8	—	—	—
W209PPB11	W209PPB11	—	DS209TT10	—
W210PPB2	W210PPB2	—	DS210TT2	3AC10-1-15/16
W210PPB4	W210PPB4	—	DS210TT4	3AS10-1-1/8
W210PPB5	W210PPB5	AS4510D	DS210TT5	3AS10-1-3/4
W210PPB6	W210PPB6	—	—	2AS10-1-1/8
W211PPB2	W211PPB2	—	DS211TT2	3AC11-2-3/16
W211PPB3	W211PPB3	AS4511BE	DS211TT3	3AS11-1-1/2
W211PPB6	W211PPB6	AS4511AC	DS211TT6	4AS11-1-1/2
W208PP4	W208PP4	—	—	—
W208PP5	W208PP5	AS4508BH	DC208TT5	5AS08-1-1/8
W208PP6	W208PP6	—	DC208TT6	5AS08-1
W208PP7	W208PP7	—	—	—
W208PP8	W208PP8	AS4508BD	DC208TT8	6AS09-1-1/8
W208PP10	W208PP10	—	DC208TT10	—
W210PP2	W210PP2	—	DC210TT2	7AC10-1-15/16
W210PP4	W210PP4	AS4510B	DC210TT4	7AS10-1-1/8
W211PP2	W211PP2	AS4511C	DC211TT7	7AC11-2-3/16
W211PP3	W211PP3	AS4511BD	DC211TT3	7AS11-1-1/2
W211PP5	W211PP5	AS4511AE	DC211TT5	6AS11-1-1/2V1
GW208PPB5	GW208PPB5	RAS4508BJ	DS208TTR5	1AS08-1-5/32D1
GW208PPB6	GW208PPB6	RAS4508AE	DS208TTR6	—
GW208PPB8	GW208PPB8	RAS4508EF	DS208TTR8	2AS08-1-1/8D1
GW209PPB2	GW209PPB2	RAS4509BE	DS209TTR2	3AC09D1
GW209PPB4	GW209PPB4	RAS4509BD	DS209TTR4	3AC09-1-1/2D1
GW209PPB5	GW209PPB5	RAS4509A	DS209TTR5	—
GW209PPB8	GW209PPB8	—	DS209TTR8	—
GW209PPB11	GW209PPB11	—	DS209TTR10	1AC09DIV1
GW210PPB2	GW210PPB2	—	DS210TTR2	3AC10-1-15/16D1
GW210PPB4	GW210PPB4	—	DS210TTR4	—
GW210PPB5	GW210PPB5	—	DS210TTR5	3AC10-1-3/4D1
GW211PPB2	GW211PPB2	—	DS211TTR2	3AC11-2-3/16D1
GW211PPB3	GW211PPB3	RAS4511BE	DS211TTR3	3AS11-1-1/2D1
GW211PPB8	GW211PPB8	—	—	—
GW211PPB9	GW211PPB9	—	DS211TTR9	1AC11-2-3/16DIV1
GW211PPB10	GW211PPB10	—	—	—
GW211PPB11	GW211PPB11	—	—	—
GW211PPB13	GW211PPB13	—	—	—
GW211PPB14	GW211PPB14	—	—	—
GW208PP17	GW109PP17	—	DC209TTR17	—
GW210PP4	GW210PP4	RAS4510B	DC210TTR4	7AS10-1-1/8D1
GW211PP2	GW211PP2	RAS4511C	DC211TTR2	7AC11-2-3/16D1
GW211PP3	GW211PP3	RAS4511BD	DC211TTR3	7AS11-1-1/2D1
GW211PP17	GW211PP17	—	—	—

Tractor Wheel Bearing Kit



A&L NUMBER	BCA NUMBER	IHC NUMBER
AK9	AK9	63881C91

KIT CONTAINS

- 1- LM48510
- 1- LM48548
- 1- M12610
- 1- M12649
- 1- Wear Ring
- 1- Oil Seal
- 1- Grease Cap

Special Agricultural Bearings

A&L NUMBER	BCA NUMBER	FAFNIR NUMBER	BORE	O.D.	OVERALL WIDTH	SPECIAL FEATURES
SCE146	SCE146	B-146	0.8750	1.125	0.3750	IHC COTTON PICKER SPINDEL BAR
SCE148	SCE148	B-148	0.8750	1.2500	0.5000	JD COTTON PICKER SPINDEL BAR
202NPP9	202FFH8	202NPP9	0.5000	1.5000	0.4330	SPHERICAL O.D.
202RRE	202RRE	202KRR8	0.5906	1.3750	0.8780	SPECIAL WIDTH
203JD	N/A	N/A	17mm	40mm	14mm	NTN 0366C3 JD AA34132
203KRR2	203RRAR10	203KRR2	0.6400	1.5748	0.7200	SPECIAL BORE
203KRR5	203RRAR8	203KRR5	0.5150	1.5748	0.7200	SPECIAL BORE
203KRR2DG	N/A	N/A	0.6400	1.5748	0.7200	GOTHIC ARCH DOUBLE LIP SEALS
204FREN	204FREN	P204KRNP2	0.6320	1.7805	0.7350	SPECIAL BORE, O.D. AND WIDTH.
204KRD4	204FGB	204KRD4	0.6290	1.8504	0.6860	SPECIAL BORE, O.D. AND WIDTH.
204KRR8	204BBE	204KRR8	0.6260	1.7805	0.6100	SPECIAL BORE AND WIDTH
204RY2	204FVMN	204RY2	0.6260	1.7805	0.7350	GOTHIC ARCH, DOUBLE LIP SEALS
205GP	N/A	N/A	0.6299	2.0964	0.7638	GOTHIC ARCH RACEWAYS
205DDS 5/8	N/A	N/A	0.6250	2.0866	0.7638	GOTHIC ARCH TRIPLE LIP SEALS
205DDS 3/4	N/A	N/A	0.7500	2.0866	0.7638	GOTHIC ARCH TRIPLE LIP SEALS
205NPP9	205TTB	205NPP9	0.7500	2.0472	1.3750	SPECIAL CONSTRUCTION
205RVA	205RVA	205KRP2	0.7560	2.0472	0.8310	SPECIAL CONSTRUCTION
205PPB7	205TTH	205PPB7	0.9425	2.0472	1.3780	BORE, LONG INNER, TRI-PLY
206KRRB6	HPS100GP	206KRRB6	1.0000	2.4409	0.9449	SPHERICAL O.D., HEX BORE
206KRR6	HCP100GP	206KRR6	1.0000	2.4409	0.9449	CYLINDRICAL O.D., HEX BORE
Z9504AB	204BBAR	204RR6	0.7505	1.7805	0.6100	BORE, ONE RS, ONE LAND-RIDING SEAL
Z9504RST	204BBAR	204RR6	0.7505	1.7805	0.6100	TWO ARMOR GUARD SEALS
99502H	202FFB	N/A	0.6250	1.3750	0.4331	SPECIAL BORE, O.D.
499502H	202FFLB	N/A	0.6250	1.3750	0.4331	SAME AS 99502H PLUS SNAP RING

Engineering Information

BALL BEARING INSERTS & UNITS

I. MATERIALS

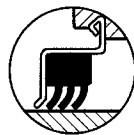
Rings & Balls —A&L uses SAE-52100 vacuum degassed, high chromium bearing steel as its standard material for precision bearings rings and balls.

Seals & Shields —A&L centrifugal type seals are especially designed to keep out dirt and other contaminants under the most severe conditions. The four standard seal types below indicate the respective bearing types on which they may be used. For high temperature applications, IBI uses special shields which allow use up to the limiting temperature of the grease or heat treatment of the bearing steel.



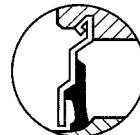
SR Type Seal

UC200
HC200
UCX00
SER200



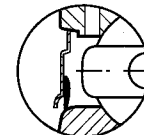
R-3 Type Seal

UC200
HC200
UCX00
W200PPB
GW200PP
GW200PPB



A Type Seal

SA200



B Type Seal

SA200
SB200

Grease —A&L bearings are prelubricated with a lithium based, general purpose bearing grease with good water and corrosion resistance. The normal operating temperature range of a lithium based general purpose grease is -30°F to 230° F. For higher temperature applications, consult IBI for further information. When using relubricatable bearings, the following schedule is a guide for lubrication.

CONDITIONS

Speed	Temperature	Cleanliness	Greasing Interval
100 RPM	Up to 120°F	Clean	6 to 12 Months
500 RPM	Up to 150°F	Clean	2 to 6 Months
1000 RPM	Up to 210°F	Clean	2 Weeks to 2 Months
1500 RPM	Over 210°F	Clean	Weekly
—	Up to 150°F	Dirty	1 Week to 1 Month
—	Over 150°F	Dirty	Daily to 2 Weeks
—	Over 200°F	Very Dirty	Daily to 1 Week
—	Over 200°F	Extreme Conditions	Daily to 1 Week

Housing —A&L uses class 3 grade cast iron with minimum tensile strength of 30,000 lbs. As standard material for its housings. Ductile iron can be used upon request for many housings and is specified by "D" suffix after the basic bearing series, e.g., UCP205-16D.

Mechanical properties of Gray cast iron class 3

CLASS	Thickness (in.)		Diameter of Testing Bar (in.)	Tension test	Traverse breaking test		Hardness test
	over	incl.		Tensile strength (psi) over	Maximum load (lbf) over	Detection (in) over	
Gray	0.1575	0.3150	0.5118	34000	440	0.0787	255
Cast	0.3150	0.5906	0.7874	31000	990	0.1181	235
Iron	0.5906	1.1811	1.1811	28000	1980	0.1772	223
Class 3	1.1811	1.9685	1.7717	27000	4400	0.2559	217

Load Ratings

II. TOLERANCES

Shaft tolerance — A snug fit of the bearing on the shaft should be used for ultimate bearing life. For standard applications the following shaft tolerances should not be exceeded when using IBI Bearing Insert and Units.

Shaft Diameter	Shaft Tolerance
1/2" through 1-15/16" 2" through 3"	Nominal to -0.0005" Nominal to -0.0010

LOAD RATINGS

Bearing Numbers						Load Ratings												
Normal Duty			Light Duty		Medium Duty	Basic @ 33-1/3 rpm	Radial - In pounds at Various rpm based on 500 hours minimum life											
UC2	HC2	SER2	SA2	SB2	UCX		50	100	200	300	500	900	1200	1500	1800	2400	3600	5000
—	—	—	SA201-8 SA202 SA202-10 SA203	SB201-8 SB202 SB202-10 SB203	—	1675	1641	1220	920	805	680	560	510	470	440	400	366	315
UC201 UC201-8	HC201 HC201-8	SER201 SER201-8																
UC202 UC202-10	HC202 HC202-10	SER202 SER202-10				2226	1940	1540	1220	1070	900	740	670	630	590	540	467	420
UC204-12 UC204	HC204-12 HC204	SER204-12 SER204	SA204-12 SA204	SB204-12 SB204														
UC205-14 UC205-15 UC205 UC205-16	HC205-14 HC205-15 HC205 HC205-16	SER205-14 SER205-15 SER205 SER205-16	SA205-14 SA205-15 SA205 SA205-16	SB205-14 SB205-15 SB205 SB205-16		2420	2120	1680	1330	1170	985	810	730	680	640	580	510	456
UC206-18 UC206 UC206-19 UC206-20	HC206-18 HC206 HC206-19 HC206-20	SER206-18 SER206 SER206-19 SER206-20	SA206-18 SA206 SA206-19 SA206-20	SB206-18 SB206 SB206-19 SB206-20	UCX05 UCX05-16	3370	2960	2340	1860	1620	1370	1120	1020	950	890	810	710	—
UC207-20 UC207-21 UC207-22 UC207 UC207-23	HC207-20 HC207-21 HC207-22 HC207 HC207-23	SER207-20 SER207-21 SER207-22 SER207 SER207-23	SA207-20 SA207-21 SA207-22 SA207 SA207-23	SB207-20 SB207-21 SB207-22 SB207 SB207-23	UCX06 UCX06-19 UCX06-20	4450	3880	3090	2450	2200	1810	1260	1350	1250	1170	1070	935	—
UC208-24 UC208-25 UC208	HC208-24 HC208 HC208	SER208-24 SER208 SER208	SA208-24 SA208 SA208	SB208-24 SB208 SB208	UCX07-22 UCX07 UCX07-23	5030	4390	3500	2760	2430	2040	1680	1520	1410	1330	1210	—	—
UC209-26 UC209-27 UC209-28 UC209	HC209-26 HC209-27 HC209-28 HC209	SER209-26 SER209-27 SER209-28 SER209	SA209-26 SA209-27 SA209-28 SA209	SB209-26 SB209-27 SB209-28 SB209	UCX08-24 UCX08	5660	4960	3730	3110	2730	2300	1950	1720	1590	1500	1360	—	—

Load Ratings

Set Screw Torque — Set screws should be tightened evenly on the shaft until both are snug. Then each set screw should be further tightened to the torque value within the appropriate limits specified in the following table.

SET SCREW TORQUE LIMITS

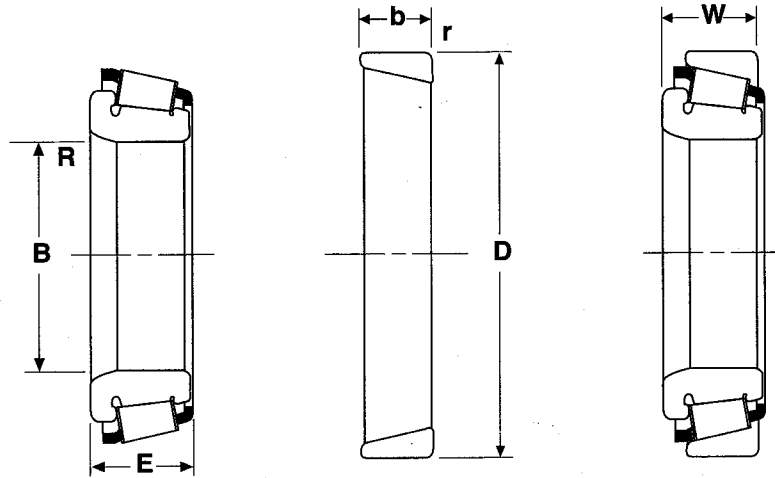
Set Screw Size	Torque Limit (Inch / Lbs.)	
	Minimum	Maximum
10/32	20	22
1-4/28	31	35
5-16/28	70	74
3-8/24	138	143
7-16/20	200	210

CAUTION: Do not over tighten set screws.

LOAD RATINGS

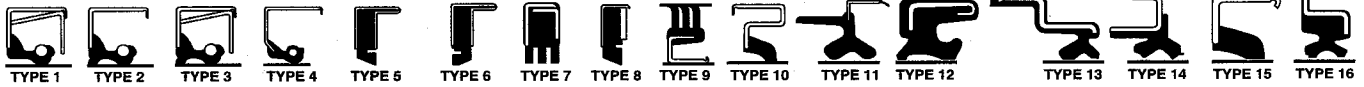
Bearing Numbers						Load Ratings												
Normal Duty		Light Duty			Medium Duty	Basic @ 33-1/3 rpm	Radial - In pounds at Various rpm based on 500 hours minimum life											
UC2	HC2	SER2	SA2	SB2	UCX		50	100	200	300	500	900	1200	1500	1800	2400	3600	5000
UC210-30	HC210-30	SER210-30	SA210-30	SB210-30	UCX09-27	6020	5250	4170	3310	2890	2440	2180	1820	1690	1590	1440	—	—
UC210-31	HC210-31	SER210-31	SA210-31	SB210-31	UCX09-28													
UC210-32	HC210-32	SER210	SA210	SB210	UCX09													
UC210	HC210																	
UC211-32	HC211-32	SER211-32	SA211-32	SB211-32	UCX10-31	7450	6500	5160	4100	3580	3020	2480	2260	2000	1970	1790	—	—
UC211-34	HC211-34	SER211	SA211	SB211	UCX10-32													
UC211	HC211																	
UC211-35	HC211-35	SER211-35	SA211-35	SB211-35														
UC212-36	HC212-36	SER212	—	—	UCX11	8990	7850	6230	4950	4320	3640	3000	2720	2530	2070	—	—	—
UC212	HC212																	
UC212-38	HC212-38																	
UC212-39	HC212-39																	
UC213-40	HC213-40	—	—	—	UCX12	9833	8580	6840	5410	4720	3980	3280	2980	2760	2595	—	—	—
UC213	HC213																	
UC214-44	HC214-44	—	—	—	UCX13-40	10690	9330	7410	5780	5130	4330	3570	3240	3005	2820	—	—	—
UC214	HC214																	
UC215	HC215	—	—	—	UCX14-44	11440	9970	7930	6290	5490	4630	3810	3470	3210	3020	—	—	—
UC215-47	HC215-47																	
UC215-48	HC215-48																	
UC216		—	—	—	UCX15	12480	10890	8650	6860	5990	5050	4160	3780	3505	3290	—	—	—
UC217		—	—	—	UCX16	14400	11570	9980	7920	6900	5830	4800	4360	4045	—	—	—	—
UC218		—	—	—	UCX17-52	16510	14420	11460	9080	7930	6700	5500	5000	4640	—	—	—	—
		—	—	—	UCX18-56	18700	16320	12940	10280	8970	7570	6230	5410	5250	—	—	—	—
		—	—	—	UCX20	23100	20200	16100	14420	12750	9390	8030	7010	6510	—	—	—	—

Tapered Roller Bearings



A&L Cone	B		E		Max. Shaft fillet radius 1 R		IBI Cup	D		b		Max. Housing fillet radius 1 r		W	
	Inch	mm	Inch	mm	Inch	mm		Inch	mm	Inch	mm	Inch	mm	Inch	mm
LM11700 SERIES															
LM11749	.6875	17.462	.5750	14.605	.05	1.3	LM11710	1.5700	39.878	.4200	10.668	.05	1.3	.5450	13.843
LM11900 SERIES															
LM11949	.7500	19.050	.6550	16.637	.05	1.3	LM11910	1.7810	45.237	.4750	12.065	.05	1.3	.6100	15.494
M12600 SERIES															
M12649	.8437	21.430	.7200	18.288	.05	1.3	M12610	1.9687	50.005	.5500	13.970	.05	1.3	.6900	17.526
LM12700 SERIES															
LM12749	.8661	22.000	.6550	16.637	.05	1.3	LM12710	1.7810	45.237	.4750	12.065	.05	1.3	.6100	15.494
							LM127111	1.8110	46.000	.4750	12.065	.05	1.3	.6100	15.494
25500 SERIES															
25580	1.7500	44.450	1.0000	25.400	.14	3.5	25520	3.2700	83.058	.7500	19.050	.13	3.3	.9375	23.812
L44600 SERIES															
L44643	1.0000	25.400	.5800	14.732	.05	1.3	L44610	1.9800	50.292	.4200	10.668	.05	1.3	.5600	14.224
L44649	1.0625	26.988	.5800	14.732	.14	3.5									
L45400 SERIES															
L45449	1.1417	29.000	.5800	14.732	.14	3.5	L45410	1.9800	50.292	.4200	10.668	.05	1.3	.5600	14.224
LM48500 SERIES															
LM48548	1.3750	34.925	.7200	18.288	spec.	spec.	LM48510	2.5625	65.088	.5500	13.970	.05	1.3	.7100	18.034
LM67000 SERIES															
LM67048	1.2500	31.750	.6600	16.764	spec.	spec.	LM67010	2.3280	59.131	.4650	11.811	.05	1.3	.6250	15.875
LM67049A	1.2500	31.750	.6600	16.764	.03	0.8									
L68100 SERIES															
L68149	1.3780	35.00	.6600	16.764	.203	5.2	L68110	2.3280	59.131	.4700	11.938	.05	1.3	.6250	15.875
							L68111	2.3622	60.000	.4700	11.938	.05	1.3	.6250	15.875
L69300 SERIES															
JL69349	1.4961	38.000	.6693	17.000	spec.	spec.	JL69310	2.4803	63.000	.5313	13.495	.05	1.3	.6693	17.000
LM102900 SERIES															
LM102949	1.7812	45.242	.7800	19.812	.14	3.5	LM102910	2.8910	73.431	.6200	15.748	.03	0.8	.7700	19.558
LM104900 SERIES															
LM104949	2.0000	50.800	.8750	22.225	.14	3.5	LM104911	3.2500	82.550	.6500	16.510	.05	1.3	.8500	21.590
JLM104948	1.9685	50.000	.8465	21.500	.12	3.0	JLM104910	3.2283	82.000	.6693	17.000	.02	0.5	.8465	21.500
M201000 SERIES															
M201047	1.5625	39.688	.8700	22.096	.03	0.8	M201011	2.8750	73.025	.8400	21.336	.09	2.3	1.0100	25.654
*.09 in. (2.3mm) front face chamfer															
LM501300 SERIES															
LM501349	1.6250	41.275	.7800	19.812	.14	3.5	LM501310	2.8910	73.431	.5800	14.732	.03	0.8	.7700	19.558
							LM501314	2.8910	74.431	.6537	16.604	.03	0.8	.8437	21.430

Oil & Grease Seals



A&L NUMBER	SEAL TYPE	SHAFT SIZE	SEAL O.D.	SEAL WIDTH
471689	TYPE 2	1.000"	1.756"	.313"
204505	TYPE 6	1.125"	1.785"	.469"
203025	TYPE 5	1.219"	1.963"	.406"
7412S	TYPE 4	1.250"	1.756"	.250"
204507	TYPE 6	1.250"	1.983"	.406"
7781S	TYPE 5	1.250"	1.987"	.250"
40652S	TYPE 8	1.250"	2.004"	.250"
472258	TYPE 2	1.375"	2.004"	.313"
471192	TYPE 2	1.375"	2.129"	.313"
204027	TYPE 6	1.375"	2.332"	.406"
203013	TYPE 5	1.500"	2.332"	.500"
204013	TYPE 6	1.500"	2.332"	.460"
200861	TYPE 7	1.500"	1.495"	.290"
41461S	TYPE 8	1.500"	2.627"	.250"
43808	TYPE 8	1.500"	2.720"	.250"
452554	TYPE 1	1.500"	1.987"	.437"
204017	TYPE 6	1.625"	2.332"	.438"
204500	TYPE 6	1.625"	2.566"	.250"
6283S	TYPE 9	1.625"	1.620"	.250"
4763S	TYPE 10	1.625"	2.566"	.438"
200886	TYPE 7	1.687"	2.725"	.290"
40286	TYPE 8	1.625"	2.725"	.250"
472193	TYPE 2	1.750"	2.565"	.313"
204502	TYPE 6	1.750"	2.721"	.438"
473796	TYPE 2	1.750"	2.569"	.313"
200854	TYPE 7	1.750"	2.728"	.294"
204038	TYPE 6	1.750"	2.721"	.359"
200354	TYPE 7	1.750"	2.722"	.359"
7186S	TYPE 7	1.812"	2.722"	.270"
203034	TYPE 5	1.875"	3.001"	.312"
473239	TYPE 2	1.875"	3.000"	.437"
200371	TYPE 7	1.945"	2.896"	.290"
200881	TYPE 7	2.000"	2.824"	.250"
204508	TYPE 6	2.000"	3.066"	.250"
410102	TYPE 3	2.000"	3.376"	.468"
204506	TYPE 6	2.000"	3.628"	.250"
200110	TYPE 7	2.058"	3.154"	.270"
473473	TYPE 2	2.250"	3.066"	.250"
200763	TYPE 7	2.250"	3.250"	.285"
412920	TYPE 3	2.250"	3.376"	.375"
204035	TYPE 6	2.296"	3.153"	.359"
200855	TYPE 7	2.375"	3.616"	.290"
410987	TYPE 3	2.375"	3.486"	.437"
455280	TYPE 1	2.562"	3.881"	.468"
200392	TYPE 7	2.625"	3.818"	.415"
7208S	TYPE 7	3.250"	4.600"	.313"
25x52x7	TYPE 6	25MM	52MM	7MM
3087	TYPE 11	2.048"	2.732"	.570"
6840S	TYPE 12	1.730"	2.340"	.250"
7022S	TYPE 13	1.688"	2.332"	.531"
8121S	TYPE 14	1.730"	2.340"	.470"
8705S	TYPE 15	1.734"	2.405"	.210"
9015S	TYPE 15	2.000"	2.569"	.500"
6815	TYPE 16	1.938"	2.506"	.281"
8871	TYPE 15	2.000"	2.566"	.234"

Seal Interchange

COMPETITOR TO OUR NUMBER

CR	A&L / National
Chicago Rawhide CR	A&L NUMBER
9997	471689
11164	204505
12124	203025
12363	7412S
12411	204507
12437	7781S
12481	40652S
13569	472258
13649	471192
13711	204027
14832	452554
14972	203013
14974	204013
15174	200861
15190	41461S
15209	43808
16069	204017
16284	204500
16286	6283S
16289	4763S
16364	40286
16659	7022S
16818	200886
17110	8121S
17115	6840S
17187	8705S
17404	472193
17406	204502
17413	473796
17485	200854
17617	204038
17618	200354
18127	7186S
18808	203034
18823	473239
19221	6815
19510	200371
19753	8871
19757	9015S
19844	200881
20044	204508
20125	410102
20148	204506
20425	3087
20674	200110
22382	473473
22430	200763
22532	412920
22870	204035
23744	200855
23756	410987
25748	455280
26310	200392
32441	7208S

VICTOR	A&L / National
VICTOR NUMBER	A&L NUMBER
9760	25X52X7
46095	473796
46130	70225
46148	452554
46173	204505
46176	7412S
46410	472258
46439	8705S
46487	9015S
47017	412920
47076	204017
47260	6283S
47279	204013
47329	473473
47336	204035
47351	203013
47366	8121S
47370	7781S
47376	203025
47377	204507
47419	6815
47427	200371
47428	200763
47454	200855
47455	200110
47477	8871
47525	3087
47947	200392
47584	7186S
47587	204027
47593	204500
47593	4763S
47693	204506
47696	472193
47860	7208S
47944	200886
47946	200881
47954	41461S
48019	200854
48020	200861
48967	204502
49290	43808
49336	471192
49421	410102
49438	204508
47183	471689
49672	200354
49672	204038
49702	410987
49739	203034
49746	6840S
62384	473239
63103	40652S
66820	25X52X7

Bearing Interchange

COMPETITOR TO OUR NUMBER

BCA / FAFNIR / A&L

Federal Mogul BCA	Torrington FAFNIR	A&L NUMBER
201GC	201NPP	6201-2RS
201SS	201KDD	6201-ZZ
202	202K	6202
202CC1		6202-2RS 5/8
202CC16		6202ZZ-16
202FFB		99502H
202FFH8	202NPP-9	202NPP-9
202FFLB		499502H
202RRE	202KRR-8	202RRE
202SS	202KDD	6202-ZZ
203FF	202NPP	6202-2RS
203FF	203NPP	6203-2RS
203RRAR10	203KRR-2	203KRR-2
203RRAR8	203KRR-5	203KRR-5
203RR-12		6203-2RS 3/4
203SS	203KDD	6203-ZZ
204	204K	6204
204BBA4	204RR-7	
204BBAR	204KRR-6	Z9504AB
204BBE	204KRR-8	204KRR-8E
204FF	204NPP	6204-2RS
204FGB	204KRD-4	204KRD-4
204FREN		204FREN
204FVMN	204RY-2	204RY-2
204SS	204KDD	6204-ZZ
205	205K	6205
205FF	205NPP	6205-2RS
205RHN	205KR-3	205KR-3
205RVA	205KRP-2	205RVA
205SS	205KDD	6205-ZZ
205TTB	205NPP-9	205NPP-9
205TTH	205NPPB-7	205NPPB-7
206	206K	6206
206FF	206NPP	6206-2RS
206SS	206KDD	6206-ZZ
207	207K	6207
207FF	207NPP	6207-2RS
207SS	207KDD	6207-ZZ
208	208K	6208
208FF	208NPP	6208-2RS
208SS	208KDD	6208-ZZ
209DD	209NPP	6209-2RS
209SS	209KDD	6209-ZZ
885118B		885118B
885151E		885151E
885152		885152
885154B		885154B
8980DD	203NPP-10	6203-2RS 5/8
8984YY	203KRR-3	203KRR-3
DC208TT10	W208PP-10	W208PP-10
DC208TT5	W208PP-5	W208PP-5
DC208TT6	W208PP-6	W208PP-6
DC208TT8	W208PP-8	W208PP-8
DC208TTR17	GW208PP-17	GW208PP-17
DC210TTR3	GW210PP-3	GW210PP-3

BCA / FAFNIR / A&L

Federal Mogul BCA	Torrington FAFNIR	A&L NUMBER
DC210TTR4	GW210PP-4	GW210PP-4
DC210TT-2	W210PP-2	W210PP-2
DC210TT-4	W210PP-4	W210PP-4
DC211TT2	W211PP-2	W211PP-2
DC211TT3	W211PP-3	W211PP-3
DC211TT5	W211PP-5	W211PP-5
DC211TTR2	GW211PP-2	GW211PP-2
DC211TTR3	GW211PP-3	GW211PP-3
DC211TTR4	GW211PP-17	GW211PP-17
DS208TT11	W208PPB-11	W208PPB-11
DS208TT12	W208PPB-12	W208PPB-12
DS208TT13	W208PPB-13	W208PPB-13
DS208TT2	W208PPB-2	W208PPB-2
DS208TT2A	W208PPB-23	W208PPB-23
DS208TT4	W208PPB-4	W208PPB-4
DS208TT5	W208PPB-5	W208PPB-5
DS208TT6	W208PPB-6	W208PPB-6
DS208TT7	W208PPB-7	W208PPB-7
DS208TT8	W208PPB-8	W208PPB-8
DS208TTR8	GW208PPB-8	GW208PPB-8
DS209TT4	W209PPB-4	W209PPB-4
DS209TT5	W209PPB-5	W209PPB-5
DS209TTR10	GW209PPB-11	GW209PPB-11
DS209TTR11	GW209PPB-11	GW209PPB-11
DS209TTR2	GW209PPB-2	GW209PPB-2
DS209TTR4	GW209PPB-4	GW209PPB-4
DS209TTR5	GW209PPB-5	GW209PPB-5
DS209TTR8	GW209PPB-8	GW209PPB-8
DS209TT-2	W209PPB-2	W209PPB-2
DS210TT2	W210PPB-2	W210PPB-2
DS210TT4	W210PPB-4	W210PPB-4
DS210TT5	W210PPB-5	W210PPB-5
DS210TT6	W210PPB-6	W210PPB-6
DS210TTR2	GW210PPB-2	GW210PPB-2
DS210TTR4	GW210PPB-4	GW210PPB-4
DS210TTR5	GW210PPB-5	GW210PPB-5
DS211TT2	W211PPB-2	W211PPB-2
DS211TT3	W211PPB-3	W211PPB-3
DS211TT6	W211PPB-6	W211PPB-6
DS211TTR13	GW211PPB-13	GW211PPB-13
DS211TTR2	GW211PPB-2	GW211PPB-2
DS211TTR3	GW211PPB-3	GW211PPB-3
DS211TTR9	GW211PPB-9	GW211PPB-9
ER 16	ER-16	SER205-16
FD209RA	DHU1-3/4R-209	ST491A
FD209RB	DHU1-1/2R-209	ST491B
FD209RM	DHU1-1/8S-209	FD209RM
FD210R		SUB FD209RM
FD211RB	DHU2-3/16R-211	FD211RB
FD211RE	DHU1-3/4R-211	FD211RE
FD211RJA		FD211RJA
FNR 1R	VCJ 1	SAF205-16G
FNR 1-1/2R	VCJ 1-1/2	SAF208-24
FNR 1-1/4R	VCJ 1-1/4	SAF207-20G
FNR 1-1/4-2R	VCJ 1-1/4S	SAF206-20G

Bearing Interchange

COMPETITOR TO OUR NUMBER

BCA / FAFNIR / A&L

BCA / FAFNIR / A&L

Federal Mogul BCA	Torrington FAFNIR	A&L NUMBER
FNR 1-3/16RM	VCJ 1-3/16	SAF206-19G
FNR 1-3/8R	VCJ 1-3/8	SAF207-22G
FNR 1-7/16R	VCJ 1-7/16	SAF207-23G
FNR 3/4R	VCJ 3/4	SAF204-12G
FWG 15/16R	RCJ 15/16	HCFS205-15
FWG 1R	RCJ 1	HCFS205-16
FWG 1-11/16R	RCK 1-11/16	HCFS209-27
FWG 1-15/16R	RCJ 1-15/16	HCFS210-31
FWG 1-1/2R	RCJ 1-1/2	HCFS208-24
FWG 1-1/4R	RCJ 1-1/4	HCFS207-20
FWG 1-1/8R	RCJ 1-1/8	HCFS206-18
FWG 1-3/16RM	RCJ 1-3/16	HCFS206-19
FWG 1-3/4R	RCJ 1-3/4	HCFS209-28
FWG 1-3/8R	RCJ 1-3/8	HCFS207-22
FWG 1-5/16RM	RCJ 1-5/16	HCFS207-21
FWG 1-5/8R	RCJ 1-5/8	HCFS209-26
FWG 1-7/16R	RCJ 1-7/16	HCFS207-23
FWG 1-7/8R	RCJ 1-7/8	HCFS210-30
FWG 2R	RCJ 2	HCFS211-32
FWG 2-3/16R	RCJ 2-3/16	HCFS211-35
FWG 2-7/16R	RCJ 2-7/16	HCFS212-39
FWG 3/4R	RCJ 3/4	HCFS204-12
FWG 7/8R	RCJ 7/8	HCFS205-14
HPC100GP	206KRR-6	206KRR-6
HPS100GP	206KRRB-6	206KRRB-6
NPC008RPC	RA012RR	CSA201-08
NPC010RPC	RA010RR	CSA202-10
NPC012RPC	RA012RR	CSA204-12
NPC014RPC	RA014RR	CSA205-14
NPC015RPC	RA015RR	CSA205-15
NPC100RPC	RA100RR	CSA205-16
NPC102RPC	RA102RR	CSA206-18
NPC103RP2C	RA103RR-2	CSA206-20
NPC103RPC	RA103RR	CSA206-19
NPC104RPC	RA104RR	CSA207-20
NPC107RPC	RA107RR	CSA207-23
NPC108RPC	RA108RR	CSA208-24
NPS008RPC	RA008RRB	SA201-08
NPS010RPC	RA010RRB	SA202-10
NPS010RRC	GRA010RRB	SA202-10G
NPS012RPC	RA012RRB	SA204-12
NPS012RRC	GRA012RRB	SA204-12G
NPS014RPC	RA014RRB	SA205-14
NPS014RRC	GRA014RRB	SA205-14G
NPS015RPC	RA015RRB	SA205-15
NPS015RRC	GRA015RRB	SA205-15G
NPS100RPC	RA100RRB	SA205-16
NPS100RRC	GRA100RRB	SA205-16G
NPS101RRC	GRA101RRB	SA206-17G
NPS102RPC	RA102RRB	SA206-18
NPS102RRC	GRA102RRB	SA206-18G
NPS103RP2C	RA103RRB2	SA206-20
NPS103RPC	RA103RRB	SA206-19
NPS103RR2C	GRA103RRB2	SA206-20G

Federal Mogul BCA	Torrington FAFNIR	A&L NUMBER
NPS103RRC	GRA103RRB	SA206-19G
NPS104RPC	RA104RRB	SA207-20
NPS104RRC	GRA104RRB	SA207-20G
NPS105RPC	RA105RRB	SA207-21
NPS105RRC	GRA105RRB	SA207-21G
NPS106RPC	RA106RRB	SA207-22
NPS106RRC	GRA106RRB	SA207-22G
NPS107RPC	RA107RRB	SA207-23
NPS107RRC	GRA107RRB	SA207-23G
NPS108RPC	RA108RRB	SA208-24
NPS108RRC	GRA108RRB	SA208-24G
PNR 15/16R	VAK 15/16	SAAK205-15G
PNR 1R	VAK 1	SAAK205-16G
PNR 1-1/2R	VAK 1-1/2	SAAK208-24G
PNR 1-1/4 2R	VAK 1-1/4S	SAAK206-20G
PNR 1-1/4R	VAK 1-1/4	SAAK207-20G
PNR 1-1/8R	VAK 1-1/8	SAAK206-18G
PNR 1-3/16RM	VAK 1-3/16	SAAK206-19G
PNR 1-3/8R	VAK 1-3/8	SAAK207-22G
PNR 1-5/16R	VAK 1-5/16	SAAK207-21G
PNR 1-7/16R	VAK 1-7/16	SAAK207-23G
PNR 3/4R	VAK 3/4	SAAK204-12G
PNR 7/8R	VAK 7/8	SAAK205-14G
PTW 1-1/4R	TAK 1-1/4	HCAK207-20R3
PWG 15/16R	RAK 15/16	HCAK205-15
PWG 1R	RAK 1	HCAK205-16
PWG 1-11/16R	RAK 1-11/16	HCAK209-27
PWG 1-15/16R	RAK 1-15/16	HCAK210-31
PWG 1-1/2R	RAK 1-1/2	HCAK208-24
PWG 1-1/4R	RAK 1-1/4	HCAK207-20
PWG 1-3/16R	RAK 1-3/16	HCAK206-19
PWG 1-3/4R	RAK 1-3/4	HCAK209-28
PWG 1-3/8R	RAK 1-3/8	HCAK207-22
PWG 1-5/16R	RAK 1-5/16	HCAK207-21
PWG 1-5/8R	RAK 1-5/8	HCAK209-26
PWG 1-7/16R	RAK 1-7/16	HCAK207-23
PWG 1-7/8R	RAK 1-7/8	HCAK210-30
PWG 2R	RAK 2	HCAK211-32
PWG 2-1/4R	RAK 2-1/4	HCAK212-36
PWG 2-3/16R	RAK 2-3/16	HCAK211-35
PWG 2-7/16R	RAK 2-7/16	HCAK212-39
PWG 3/4R	RAK 3/4	HCAK204-12
PWG 7/8R	RAK 7/8	HCAK205-14
PWG1-1/8R	RAK 1-1/8	HCAK206-18
PWT 1R	TAK 1	HCAK205-16R3
PWT 1-11/16R	TAK 1-11/16	HCAK209-27R3
PWT 1-15/16R	TAK 1-15/16	HCAK210-31R3
PWT 1-1/2R	TAK 1-1/2	HCAK208-24R3
PWT 1-1/4R	TAK 1-1/4	HCAK207-20R3
PWT 1-7/16R	TAK 1-7/16	HCAK207-23R3
S202FF	202NPPB	-
S203FF	203NPPB	-
S204FF	204NPPB	-
S205FF	205NPPB	-

Bearing Interchange

COMPETITOR TO OUR NUMBER

BCA / FAFNIR / A&L

Federal Mogul BCA	Torrington FAFNIR	A&L NUMBER
S206FF	206NPPB	-
S207FF	207NPPB	-
SAFNR 15/16R	SCJ 15/16	SBF205-15G
SAFNR 1R	SCJ 1	SBF205-16G
SAFNR 1-1/2R	SCJ 1-1/2	SBF208-24G
SAFNR 1-1/4R	SCJ 1-1/4	SBF207-20G
SAFNR 1-1/4-2R	SCJ 1-1/4S	SBF206-20G
SAFNR 1-1/8R	SCJ 1-1/8	SBF206-18G
SAFNR 1-3/16RM	SCJ 1-3/16	SBF206-19G
SAFNR 1-3/8R	SCJ 1-3/8	SBF207-22G
SAFNR 1-7/16R	SCJ 1-7/16	SBF207-23G
SAFNR 3/4R	SCJ 3/4	SBF204-12G
SAFNR 7/8R	SCJ 7/8	SBF205-14G
SATNR 15/16R	SCJT 15/16	SBFL205-15G
SATNR 1R	SCJT 1	SBFL205-16G
SATNR 1-1/2R	SCJT 1-1/2	SBFL208-24G
SATNR 1-1/4R	SCJT 1-1/4	SBFL207-20G
SATNR 1-1/4-2R	SCJT 1-1/4S	SBFL206-20G
SATNR 1-1/8R	SCJT 1-1/8	SBFL206-18G
SATNR 1-3/16R	SCJT 1-3/16	SBFL206-19G
SATNR 1-3/8R	SCJT 1-3/8	SBFL207-22G
SATNR 1-7/16R	SCJT 1-7/16	SBFL207-23G
SATNR 3/4R	SCJT 3/4	SBFL204-12G
SATNR 7/8R	SCJT 7/8	SBFL205-14G
SNPS008RR	GYA008RRB	SB201-08G
SNPS010RR	GYA010RRB	SB202-10G
SNPS012RR	GYA012RRB	SB204-12G
SNPS014RR	GYA014RRB	SB205-14G
SNPS015RR	GYA015RRB	SB205-15G
SNPS100RR	GYA100RRB	SB205-16G
SNPS102RR	GYA102RRB	SB206-18G
SNPS103RR	GYA103RRB	SB206-19G
SNPS103RR2	GYA103RRB2	SB206-20G
SNPS104RR	GYA104RRB	SB207-20G
SNPS106RR	GYA106RRB	SB207-22G
SNPS107RR	GYA107RRB	SB207-23G
SNPS108RR	GYA108RRB	SB208-24G
SPB 1	PB1	SASP205-16
SPB 1-1/4	PB 1-1/4S	SASP206-20
SPB 1/2	PB 1/2	SASP201-08
SPB 3/4	PB 3/4	SASP204-12
SPB 5/8	PB 5/8	SASP202-10
SPB 7/8	PB 7/8	SASP205-14
SPNR 15/16RS	SAS 15/16	SBP205-15G
SPNR 1RS	SAS 1	SBP205-16G
SPNR 1-1/2RS	SAS 1-1/2	SBP208-24G
SPNR 1-1/4RS	SAS 1-1/4	SBP207-20G
SPNR 1-1/4-2RS	SAS 1-1/4S	SBP206-20G
SPNR 1-1/8RS	SAS 1-1/8	SBP206-18G
SPNR 1-3/16RSM	SAS 1-3/16	SBP206-19G
SPNR 1-3/8RS	SAS 1-3/8	SBP207-22G
SPNR 1-7/16RS	SAS 1-7/16	SBP207-23G
SPNR 3/4RS	SAS 3/4	SBP204-12G
SPNR 7/8RS	SAS 7/8	SBP205-14G

BCA / FAFNIR / A&L

Federal Mogul BCA	Torrington FAFNIR	A&L NUMBER
TNR 1R	VCJT 1	SAFL205-16G
TNR 1-1/2R	VCJT 1-1/2	SAFL208-24G
TNR 1-1/4R	VCJT 1-7/16	SAFL207-20G
TNR 1-1/8R	VCJT 1-1/8	SAFL206-18G
TNR 1-3/16RM	VCJT 1-3/16	SAFL206-19G
TNR 1-3/8R	VCJT 1-3/8	SAFL207-22G
TNR 1-7/16R	VCJT 1-7/16	SAFL207-23G
TNR 3/4R	VCJT 3/4	SAFL204-12G
TNR 7/8R	VCJT 7/8	SAFL205-14G
TWG 1R	RCJT 1	HCFT205-16
TWG 1-11/16R	RCJT 1-11/16	HCFT209-27
TWG 1-15/16R	RCJT 1-15/16	HCFT210-31
TWG 1-1/2R	RCJT 1-1/2	HCFT208-24
TWG 1-1/4R	RCJT 1-1/4	HCFT207-20
TWG 1-3/16RM	RCJT 1-3/16	HCFT206-19
TWG 1-3/4R	RCJT 1-3/4	HCFT209-28
TWG 1-3/8R	RCJT 1-3/8	HCFT207-22
TWG 1-7/16R	RCJT 1-7/16	HCFT207-23
TWG 3/4R	2RCJT 3/4	HCFT204-12
TWT 1R	TCJT 1	HCFT205-16R3
TWT 1-15/16R	TCJT 1-15/16	HCFT210-31R3
TWT 1-1/4R	TCJT 1-1/4	HCFT207-20R
TWT 1-3/16RM	TCJT 1-3/16	HCFT206-19R3
TWT 1-7/16R	TCJT 1-7/16	HCFT207-23R3
WPS012GRC	G1012KRRB	HC204-12
WPS014GRC	G1014KRRB	HC205-14
WPS015GRC	G1015KRRB	HC205-15
WPS100GRC	G1100KRRB	HC205-16
WPS100TRC	G1100KPPB3	HC205-16R3
WPS102GRC	G1102KRRB	HC206-18
WPS103GP2C	G1103KRRB3	HC206-20
WPS103GR2C	G1103KRRB3	HC206-20
WPS103GRC	G1103KRRB	HC206-19
WPS103TR2C	G1104KPPB4	HC206-20R3
WPS103TRC	G1103KPPB3	HC206-19R3
WPS104GRC	G1104KRRB	HC207-20
WPS104TRC	G1104KPPB2	HC207-20R3
WPS105GRC	G1105KRRB	HC207-21
WPS106GRC	G1106KRRB	HC207-22
WPS107GRC	G1107KRRB	HC207-23
WPS107TRC	G1107KPPB2	HC207-23R3
WPS108GRC	G1108KRRB	HC208-24
WPS108TRC	H1108KPPB3	HC208-24R3
WPS110GRC	G1110KRRB	HC209-26
WPS111GRC	G1111KRRB	HC209-27
WPS111TRC	G1111KPPB4	HC209-27R3
WPS112GRC	G1112KRRB	HC209-28
WPS114GRC	G1114KRRB	HC210-30
WPS115GRC	G1115KRRB	HC210-31
WPS115TRC	G1115KPPB3	HC210-31R3
WPS200GRC	G1200KRRB	HC211-32
WPS203GRC	G1203KRRB	HC211-35
WPS204GRC	G1204KRRB	HC212-36
WPS207GRC	G1207KRRB	HC212-39

Engineering

FRACTIONAL / DECIMAL / METRIC EQUIVALENTS

To convert inches to millimeters, multiply the inches by 25.4.
 To convert millimeters to inches, divide the millimeters by 25.4.
 (As established by the American Standards Association.)

Fractional	Decimal Inches	mm	Fractional	Decimal Inches	mm	Decimal Inches	mm	Decimal Inches	mm
1/64	.0156		33/64	.5156		1.0236	26	2.7953	71
1/32	.0312		17/32	.5312		1.0630	27	2.8346	72
	.0394	1	35/64	.5469		1.1024	28	2.8740	73
				.5512	14	1.1417	29	2.9134	74
3/64	.0469		9/16	.5625		1.1811	30	2.9528	75
1/16	.0625		37/64	.5781		1.2205	31	2.9921	76
5/64	.0781			.5906	15	1.2598	32	3.0315	77
	.0787	2	19/32	.5938		1.2992	33	3.0709	78
3/32	.0938		39/64	.6094		1.3386	34	3.1102	79
7/64	.1094		5/8	.6250		1.3780	35	3.1496	80
1/8	.1250	3		.6299	16	1.4173	36	3.1890	81
	.1406		41/64	.6406		1.4567	37	3.2283	82
5/32	.1562		21/32	.6562		4.4961	38	3.2677	83
	.1575	4		.6693	17	1.5354	39	3.3071	84
11/64	.1719					1.5748	40	3.3465	85
3/16	.1875		43/64	.6719		1.6142	41	3.3858	86
	.1969	5	11/16	.6875		1.6535	42	3.4252	87
13/64	.2031		45/64	.7031		1.6929	43	3.4646	88
7/32	.2188			.7087	18	1.7323	44	3.5039	89
15/64	.2344		23/32	.7188		1.7717	45	3.5433	90
	.2362	6	47/64	.7344		1.8110	46	3.5827	91
1/4	.2500			.7480	19	1.8504	47	3.6220	92
	.2656		3/4	.7500		1.8898	48	3.6614	93
	.2756	7		.7656		1.9291	49	3.7008	94
9/32	.2812		49/64	.7656		1.9685	50	3.7402	95
19/64	.2969		25/32	.7812		2.0079	51	3.7795	96
5/16	.3125			.7874	20	2.0472	52	3.8189	97
	.3150	8	51/64	.7969		2.0866	53	3.8583	98
21/64	.3281		13/16	.8125		2.1260	54	3.8976	99
11/32	.3438			.8268	21	2.1654	55	3.9370	100
	.3543	9	53/64	.8281		2.2047	56	4.1339	105
23/64	.3594		27/32	.8438		2.2441	57	4.3307	110
3/8	.3750		55/64	.8594		2.2835	58	5.5276	115
	.3906			.8661	22	2.3228	59	4.7244	120
	.3937	10	7/8	.8750		2.3622	60	4.9213	125
13/32	.4062			.8906		2.4016	61	5.1181	130
27/64	.4219			.9055	23	2.4409	62	5.3150	135
	.4331	11	29/32	.9062		2.4803	63	5.5118	140
7/16	.4375		59/64	.9219		2.5197	64	5.7087	145
29/64	.4531		15/16	.9375		2.5591	65	5.9055	150
15/32	.4688			.9449	24	2.5984	66	6.1024	155
	.4724	12	51/64	.9531		2.6378	67	6.2992	160
31/64	.4844		31/32	.9688		2.6772	68	6.4961	165
1/2	.5000			.9843	25	2.7165	69	6.6929	170
	.5118	13	63/64	.9844		2.7559	70	6.8898	175
			1	1.000				7.0866	180
								7.2835	185
								7.4803	190
								7.6772	195
								7.8740	200

A & L BEARINGS AND COMPONENTS, INC.

Limited Express Warranty / Limitation of Remedies & Liability

It is expressly understood that unless a statement is specifically identified as a warranty, statements made by A & L Bearings, Inc., (A&L) or their representatives, whether oral, written or contained in any brochure, catalog, agreement or otherwise are not express warranties and do not form a part of the basis of the bargain, but are merely A&L's opinion or commendation of A&L's products. Except as specifically set forth herein, THERE IS NO EXPRESS WARRANTY as to any of A&L's products and A&L MAKES NO WARRANTY OF MERCHANTABILITY OF THE GOODS OR OF THE FITNESS OF THE GOODS FOR ANY PARTICULAR PURPOSE. A&L MAKES NO WARRANTY AGAINST LATENT DEFECTS.

GRANT OF LIMITED EXPRESS WARRANTY

A&L warrants all A&L products purchased and retained in the United States of America to be free from defects in material and workmanship under normal use and maintenance for 6 months from date of shipment (from factory).

This warranty does not apply to: (1) Products removed and reinstalled after initial installation; (2) Products subjected to corrosion or abrasion; (3) Products which have defects or damage which result from improper installation, lubrication or maintenance, or which are caused by accident, misuse or abuse, fire, flood, alternation or mis-application of the product; (4) Products which have been subjected to misuse, negligence or accidents; or (5) Products on which payment to A&L is or has been in default.

WHAT A&L DOES NOT PROVIDE:

LABOR AND MATERIALS COSTS – A&L is not responsible for the costs of labor, materials or service incurred in removal of the defective part, or in obtaining and replacing the new or rebuilt part.

TRANSPORTATION – A&L is not responsible for transportation costs of the new or rebuilt part to the Buyer, or of the defective part from the Buyer to A&L.

LIMITATION

This Limited Express Warranty is given in lieu of all other warranties. If, notwithstanding the disclaimers contained herein, it is determined that other warranties exist, any such warranty, including without limitation any express warranties or any implied warranties of fitness for particular purpose and merchantability, shall be limited to the duration of the Limited Express Warranty. All parts shall be returned to A&L's plant in Memphis, Tennessee / freight prepaid, through A&L's chain of distribution, if A&L determines the part to be defective and within A&L's Limited Express Warranty, A&L shall, when such part has been either replaced or repaired, return such to Buyer, F.O.B. A&L's plant, Memphis, Tennessee.

LIMITATION OF REMEDIES

In the event of a breach of the Limited Express Warranty, A&L will only be obligated at A&L's option within 60 days after written notice of the failure, to repair the failed part or to furnish a new or rebuilt part in exchange for the part which has failed. If after a reasonable number of attempts by A&L to remedy the defect, malfunction or other failure and the remedy fails of its essential purpose, the Buyer shall receive a refund of the purchase price in exchange for the return of the sold good(s). Said refund shall be the maximum liability of A&L. THIS REMEDY IS THE SOLE AND EXCLUSIVE REMEDY OF THE BUYER AGAINST A&L FOR BREACH OF CONTRACT, FOR THE BREACH OF ANY WARRANTY OR FOR A&L'S NEGLIGENCE OR IN STRICT LIABILITY.

LIMITATION OF LIABILITY

A&L shall have no liability for any damages if A&L's performance is delayed for any reason or is prevented to any extent by any event such as, but not limited to, any war, civil unrest, government restrictions or restraints, strikes or work stoppages, fire flood, accident, allocation, shortages of transportation, fuel, material, or labor, acts of God or any other reason beyond the sole control of A&L. A&L EXPRESSLY DISCLAIMS AND EXCLUDES ANY LIABILITY FOR CONSEQUENTIAL OR INCIDENTAL DAMAGE IN CONTRACT, FOR BREACH OF ANY EXPRESS OR IMPLIED WARRANTY, OR IN TORT, WHETHER FOR NEGLIGENCE OR AS STRICT LIABILITY.